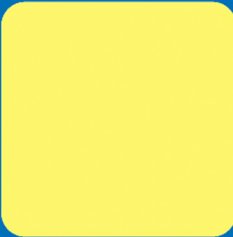
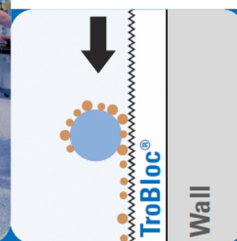
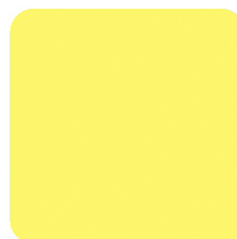
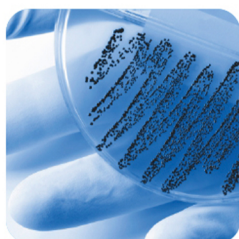


# Surface<sup>2</sup>

**TroBloc<sup>®</sup> M**

**Anti Microbial Hygienic Wall-Cladding**



Thermoplastics

## TroBloc<sup>®</sup> M - Anti Microbial Hygienic Wall-Cladding

The antimicrobial solution for hospitals, medical engineering and nursing homes

Röchling developed the **antimicrobial sheet** quality TroBloc<sup>®</sup> M.

- TroBloc<sup>®</sup> M **prevents** microbes, bacteria and also moulds that get on the surface **from proliferating**.
- To achieve this effect TroBloc<sup>®</sup> M uses modern silver ion technology. The additive, which is non-toxic to humans, acts in a purely physical manner – through the transfer of silver ions.

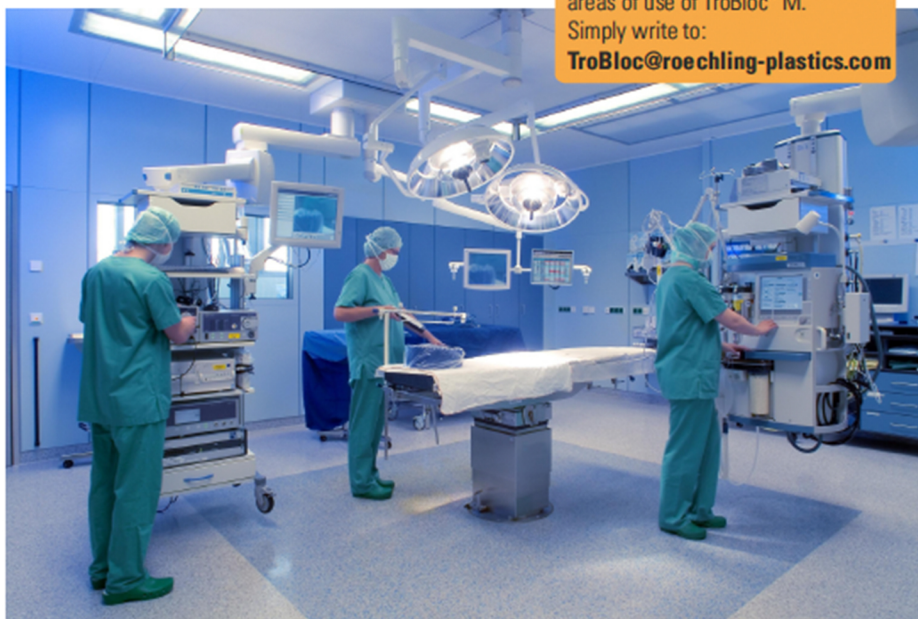
### Works also against MRSA

The reliable effectiveness also against the MRSA (Methicillin Resistant Staphylococcus Aureus) bacteria has been successfully verified in test series carried out by the laboratories of Ciba Spezialitätenchemie AG, Basel/Switzerland. MRSA has become a big problem in hospitals in many countries because of its resistance against different kinds of antibiotics and biocides.

**Contact:** We would be happy to advise you on the properties and areas of use of TroBloc<sup>®</sup> M.

Simply write to:

**TroBloc@roebling-plastics.com**



For a safe treatment and rapid recovery: The antimicrobial wall cladding TroBloc<sup>®</sup> M helps medical staff to maintain top hygiene standards in medical facilities

### Properties

- Antimicrobial effect also on MRSA (ISO 22196:2007)
- Constant, long-lasting effect
- High chemical resistance
- Extremely scratch-resistant
- Easy to clean
- Good gluability

### Areas of use

Typical applications of TroBloc<sup>®</sup> M are:

- Sick rooms
- Surgery room
- Corridors in hospitals
- Nursing homes
- Pharmaceutical companies
- Medical practice

### Product range

Sizes:

2,440 x 1,220 mm

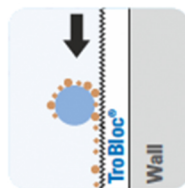
3,050 x 1,220 mm

Thickness: 2.5 mm

Other sizes on request

Colours: TroBloc<sup>®</sup> M can be produced in every required colour.

**Easy to clean:** The surface of TroBloc<sup>®</sup> M is extremely scratch-resistant and features a very low surface tension (<18 mN/m), comparable to PTFE. **Dirt does not adhere** and the surface can be cleaned very easily.



| Technical Data                  | Standard              | Unit               | Value                |
|---------------------------------|-----------------------|--------------------|----------------------|
| Modulus of elasticity           | ISO 527-2(DIN 53 457) | N/mm <sup>2</sup>  | ≥2500                |
| Coefficient of linear expansion | DIN 53 752            | K <sup>-1</sup>    | ≈70×10 <sup>-6</sup> |
| Fire behaviour                  | DIN 4102 (D)          |                    | B1, 1 to 4 mm        |
|                                 | Epiradateur-Test (F)  |                    | M1, 1 to 4 mm        |
|                                 | B.S. 476 Part 7 (GB)  |                    | Class1, 1 to 4 mm    |
| Antibacterial efficacy on       | MRSA                  | Reduction (log./%) | ≥2,5 / 99,97         |
|                                 | VRE                   |                    | ≥3,6 / 99,99         |

These data are just for information and will only result in a purchase contract after explicit agreement.