

Exterior 2.3 Essential

Range of Decors / Release April 2023

surface 
squared

For you to create

 
Fundermax

Contents

Sustainability and the Environment	4
Exterior 2.3 Essential Collection	6
Products	46
Fundermax Individual Solutions	52
Exterior Pro Collections	58

Fundermax

No matter whether it's furniture, facades, or interior design: where ideas and materials meet, you'll find Fundermax. As a global market leader in the field of compact panels and a manufacturer of high-quality wood-based materials and laminates, the company is proud to look back on a history spanning 130 years. The continued success is based on the highest quality, innovative and varied design, and sustainable production. Made in Austria—with great love for wood as a natural material, creations, and imagination.

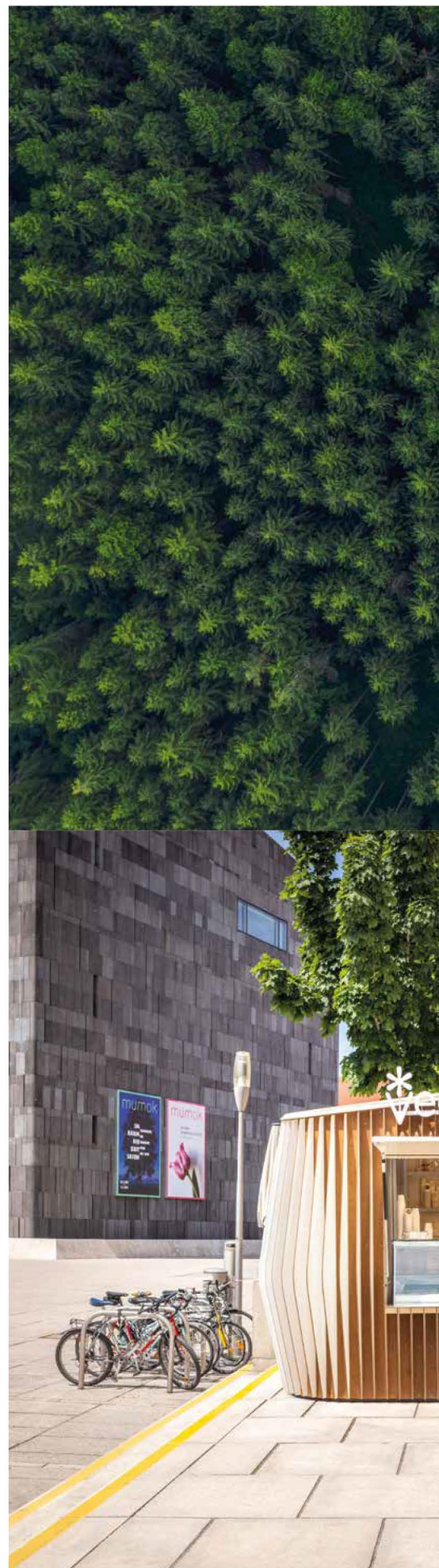
- modern production facilities in Austria and Norway
- around 1,500 employees
- annual sales of €500 million
- part of Constantia Industries AG
- The Austrian Excellence Award (2018)

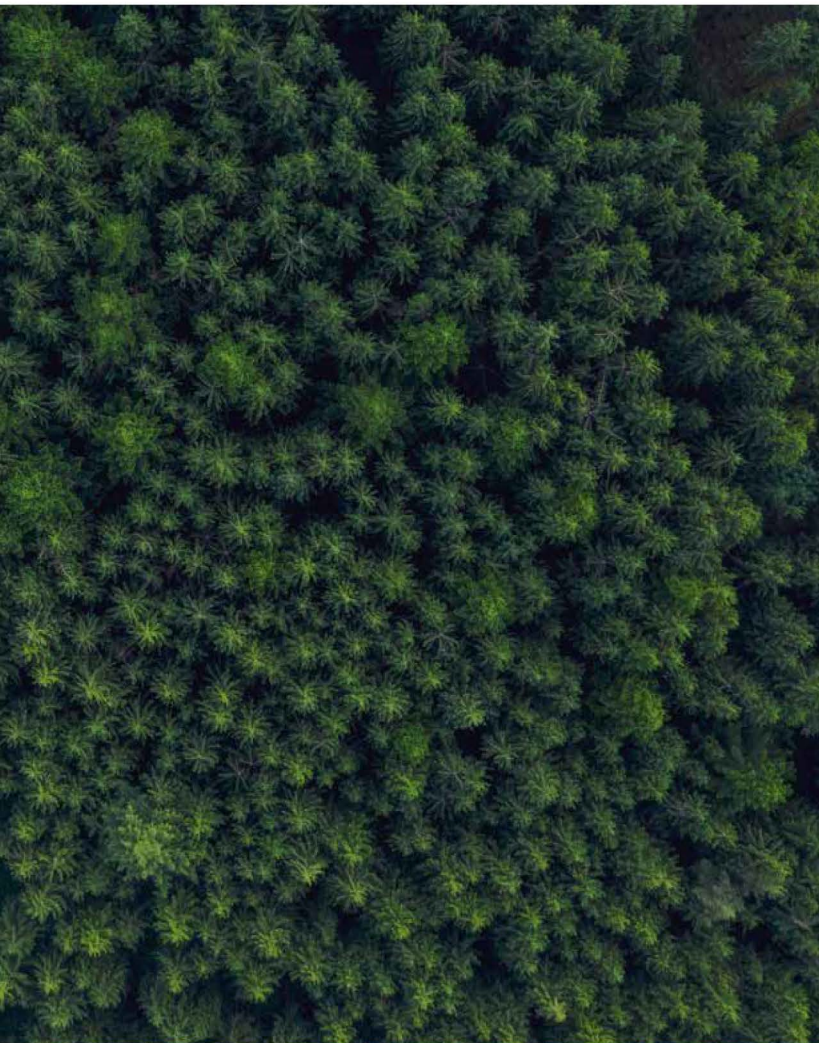


1 Sustainability and the Environment

Offering high-quality wood based compact, and HPL panels with various decors, Fundermax positions itself at the very heart of the architecture of a building. We design and manufacture a broad spectrum of products made from natural materials that are easy to work with, in order to provide architects, designers, facade designers, interior designers, and industrial companies with solutions that stand the test of time.

Fundermax has been processing natural materials with precision and love for 130 years. Today, we are manufacturers of high-quality timber composite materials and a global leader in compact laminates for both internal and external applications. Fundermax stands for nothing less than top quality and excellent design.





100% wood and paper



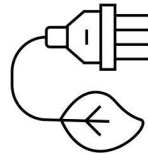
comes from sustainable and certified forestry management.

10,000 t CO₂



saved every year

100% green electricity



generated during production.

This and much more is what makes Fundermax a sustainable company, always looking to the future.

Find out more in our Sustainability Brochure via this QR code.



Sustainability Brochure

2 Exterior 2.3 | Essential Collection

Fundermax Exterior is synonymous with product quality, sustainability, innovation, and design freedom. We developed the overarching new Exterior 2.3 collection in collaboration with international architects and our experienced teams. In order to accommodate your project requirements, we divided it into two subcollections. In the Essential collection, the focus is on maximum choice of decorative finishes and efficiency. In the Pro Surface collection, it's all about design using surface textures and visual effects. For maximum design freedom, there's Fundermax Individual. Create your very own design using Fundermax custom printing or add accents by machining a design directly onto the material surface without the need for further processing. Whatever form your idea takes, the Exterior 2.3 collection from Fundermax opens up a whole world of design possibilities.

For you to create.

Exterior 2.3 Essential

Exterior 2.3 | Essential combines maximum decor choice with maximum size choice.

All of the decors in this collection are supplied in the following five sizes and with the NT surface:

- 2,800 x 1,300 mm = 3.65 m²
- 4,100 x 1,300 mm = 5.33 m²
- 3,670 x 1,630 mm = 5.98 m²
- 2,800 x 1,854 mm = 5.19 m²
- 4,100 x 1,854 mm = 7.60 m²

For details, see the delivery programme insert.

NT surface

A silky matte effect creates a delicate shimmer and, together with the fine hammered texture, the result is an aesthetic overall appearance.



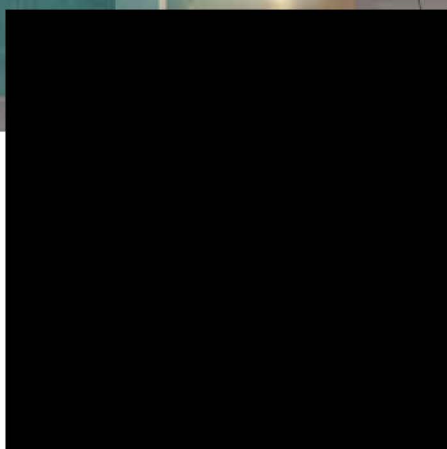
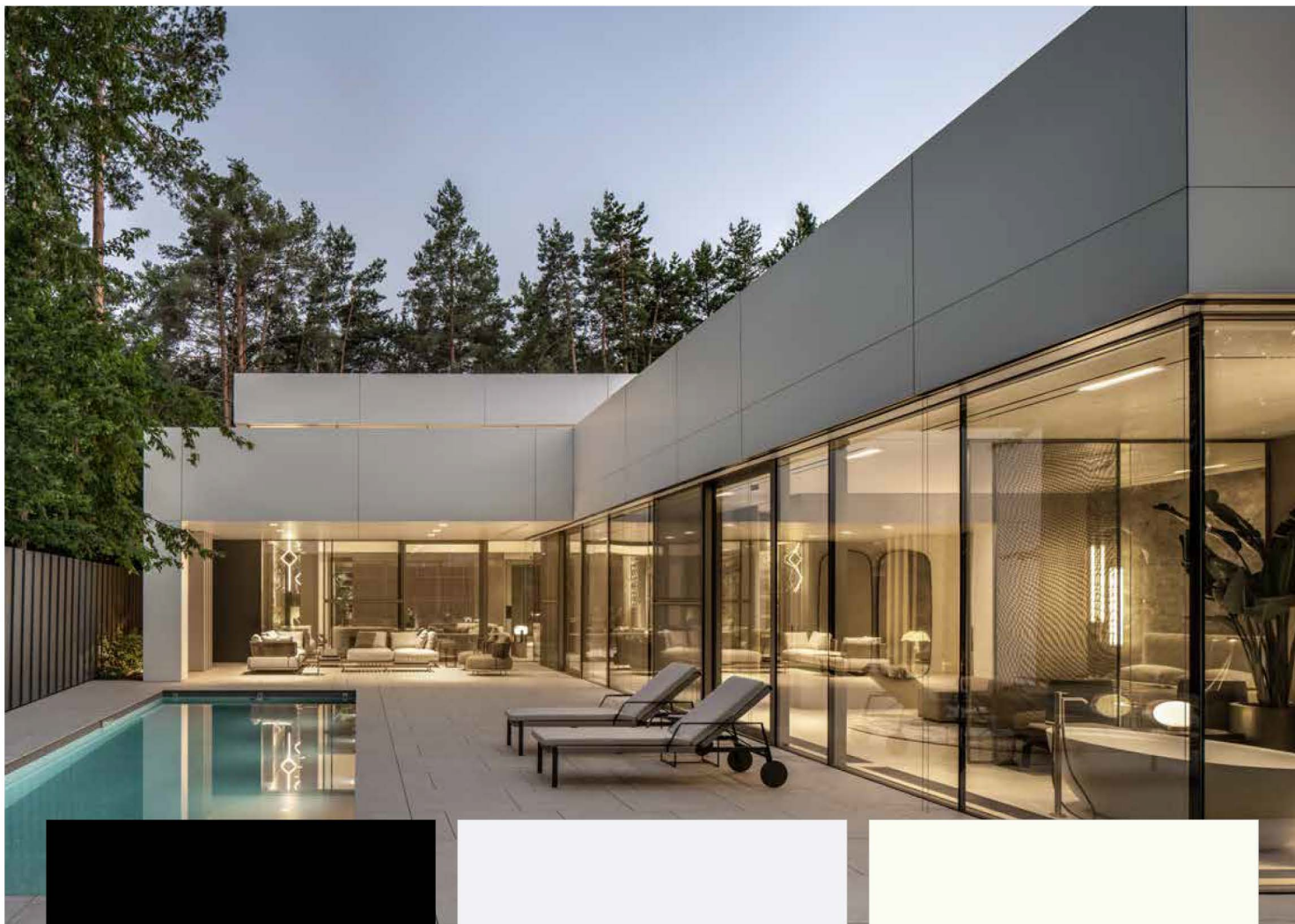
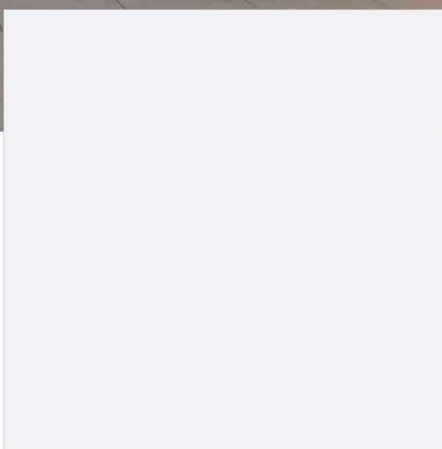
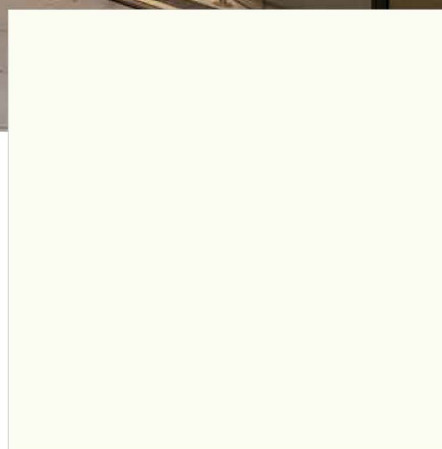
Colour

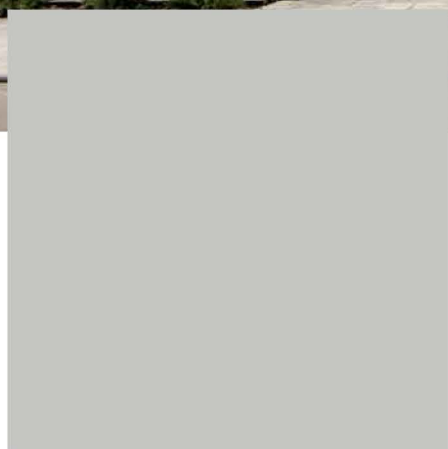
Architecture means providing perspectives and having a powerful influence on public perception.

In our Exterior 2.3 | Essential Colour range, you'll find a full spectrum of colours to allow the message of the architecture to be conveyed in a stand-alone way that makes it one of a kind.

For you to create.



**0080** Black**0091** Starlight**0085** White**0070** Carbon Grey**0776** Concrete Grey**0753** Cool Grey Medium



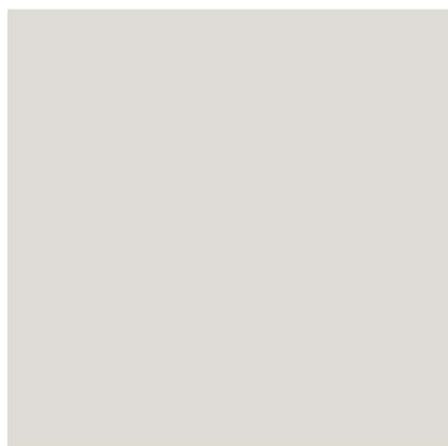
0074 Pastel Grey



0075 Dark Grey



0077 Charcoal



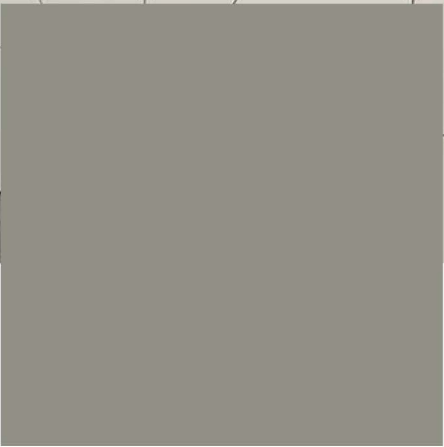
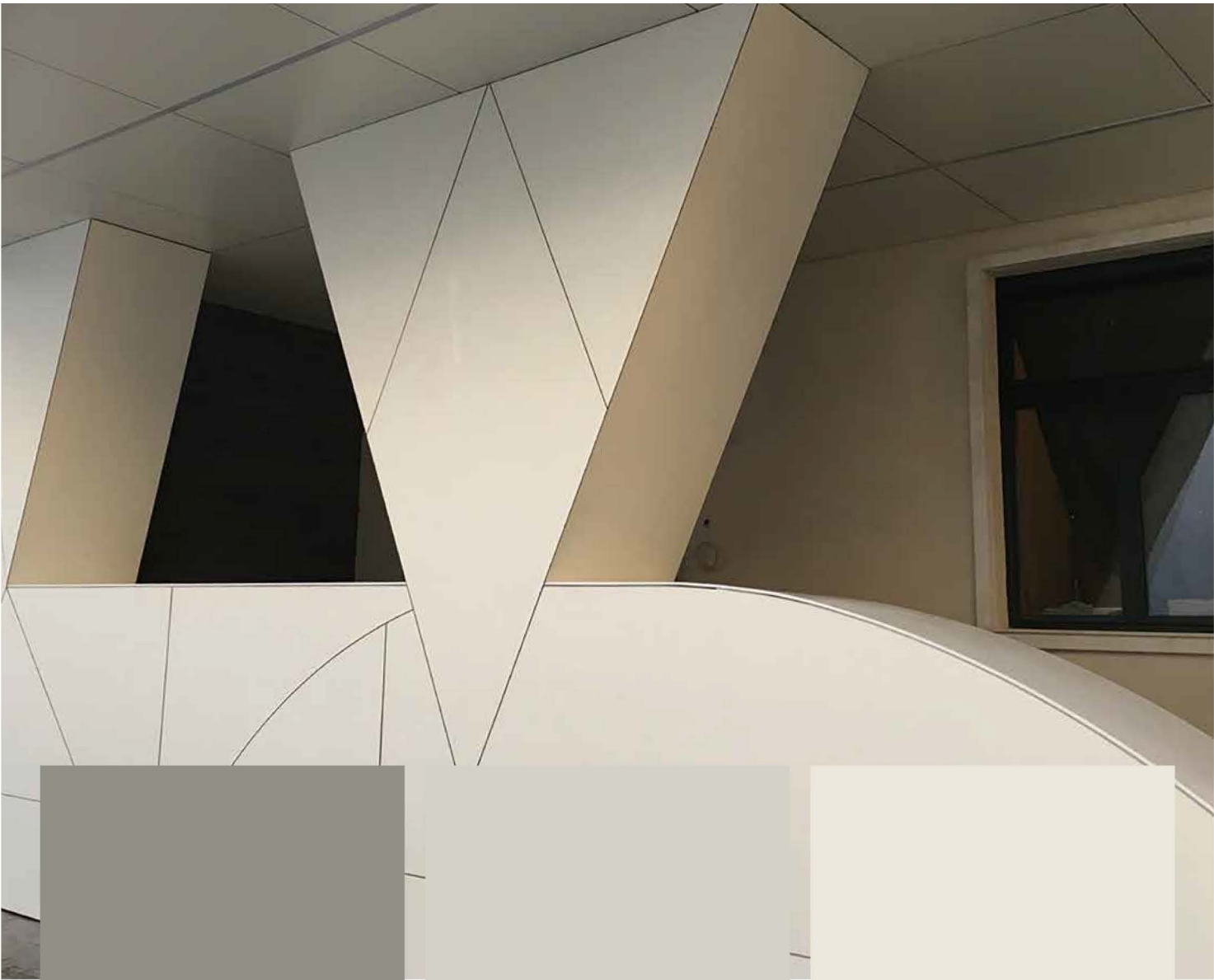
1203 Grey



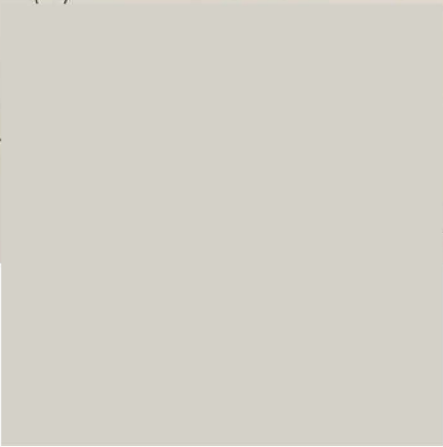
0762 Neutral Grey Medium



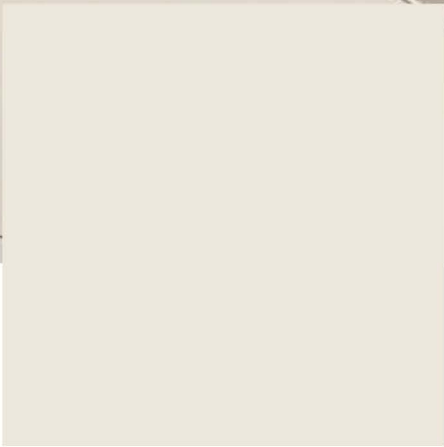
0900 Dark Cyber Grey



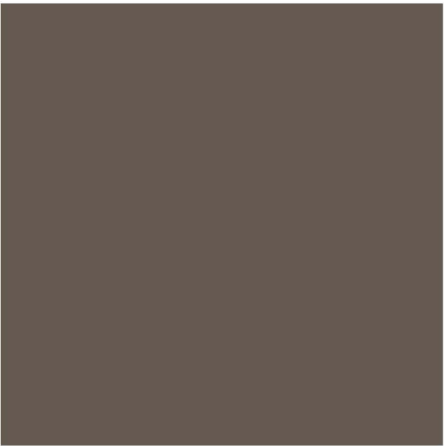
0747 Medium Grey



0741 Birch Grey



0742 Pebble Grey



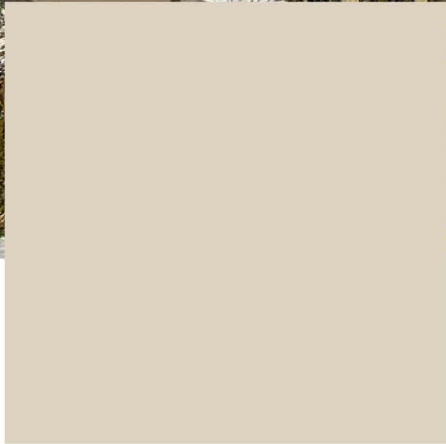
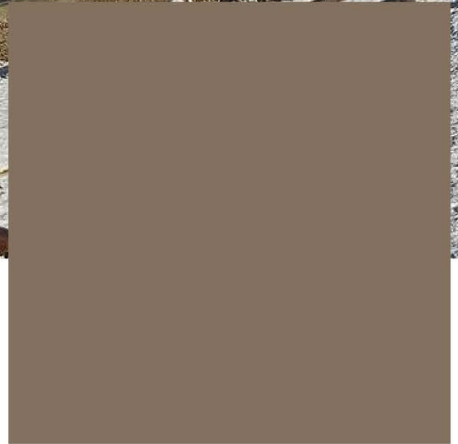
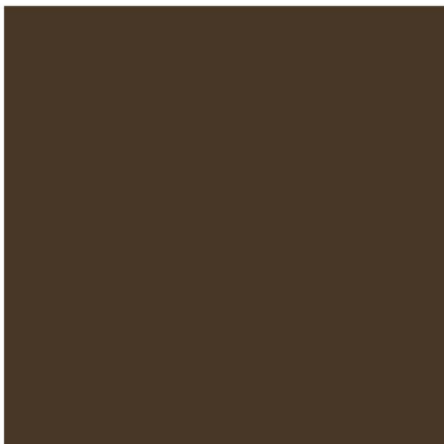
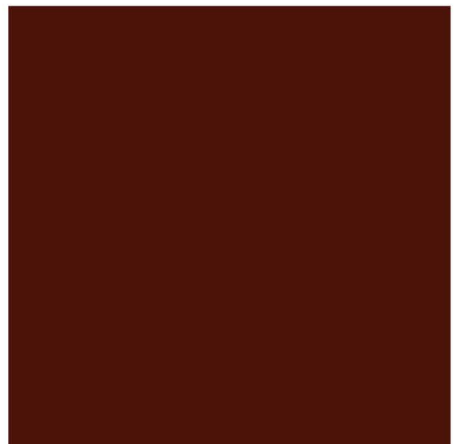
0887 Dark Offroad Greige



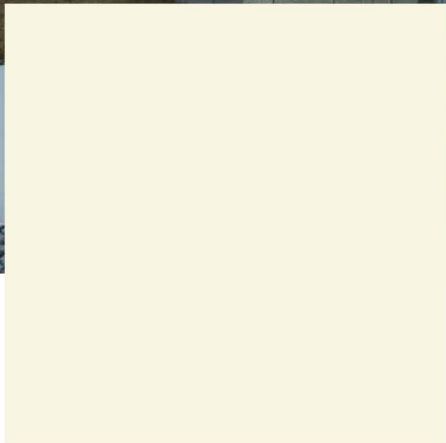
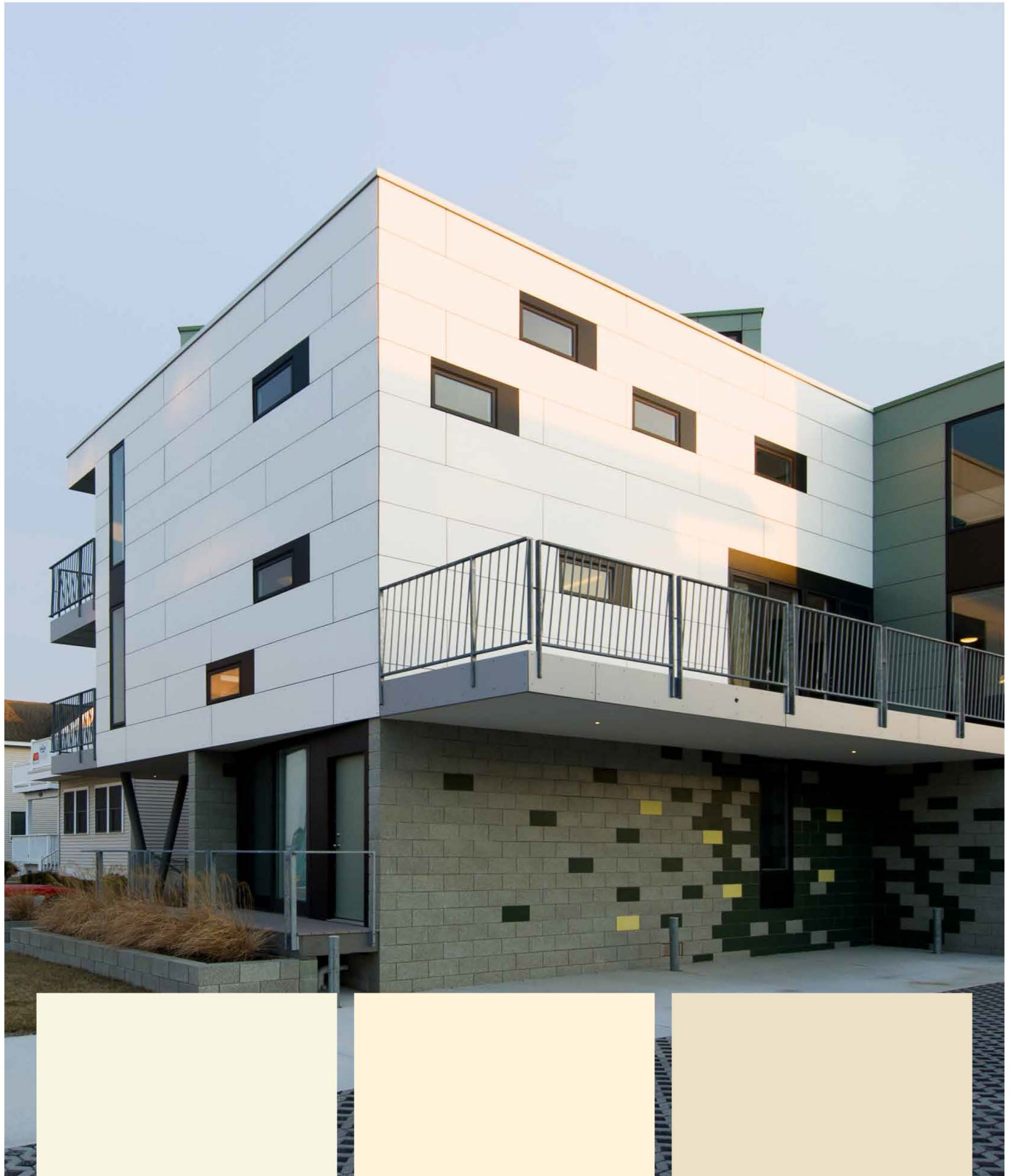
2206 Fango



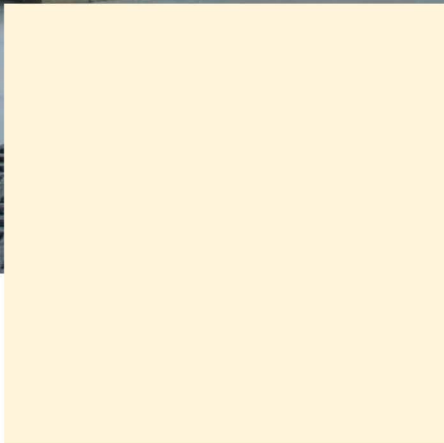
0071 Fresco

**2289** Tortora**0144** Costa**0768** Sparrow**0153** Burano**0657** Sepia Brown**0875** Chocolate Brownie

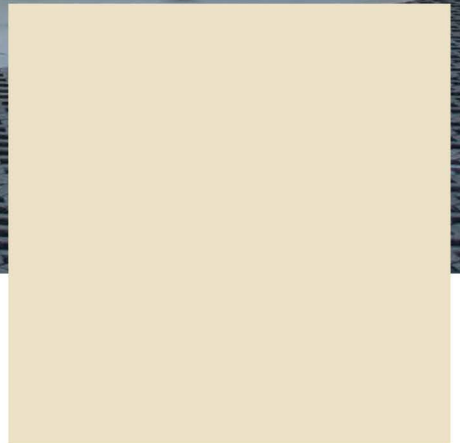
**0645 Tobacco****0098 Mandola****0081 Alpaca****0627 Hygienic Beige****0651 Cream****0733 Hygienic White**



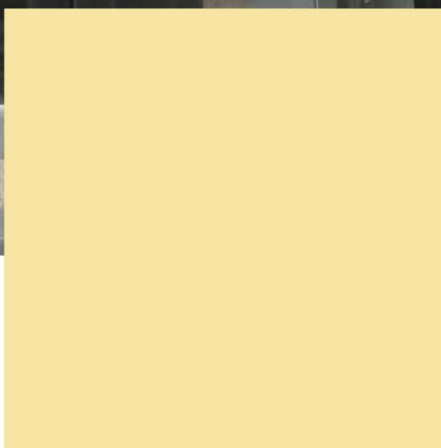
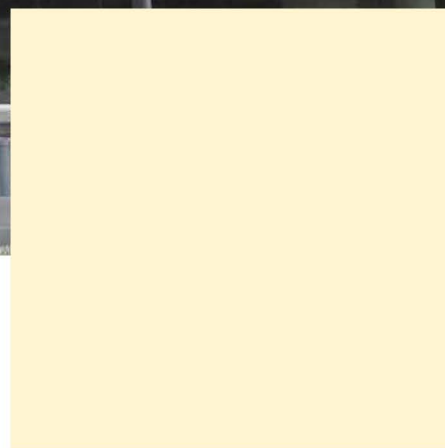
0073 Pale Ivory

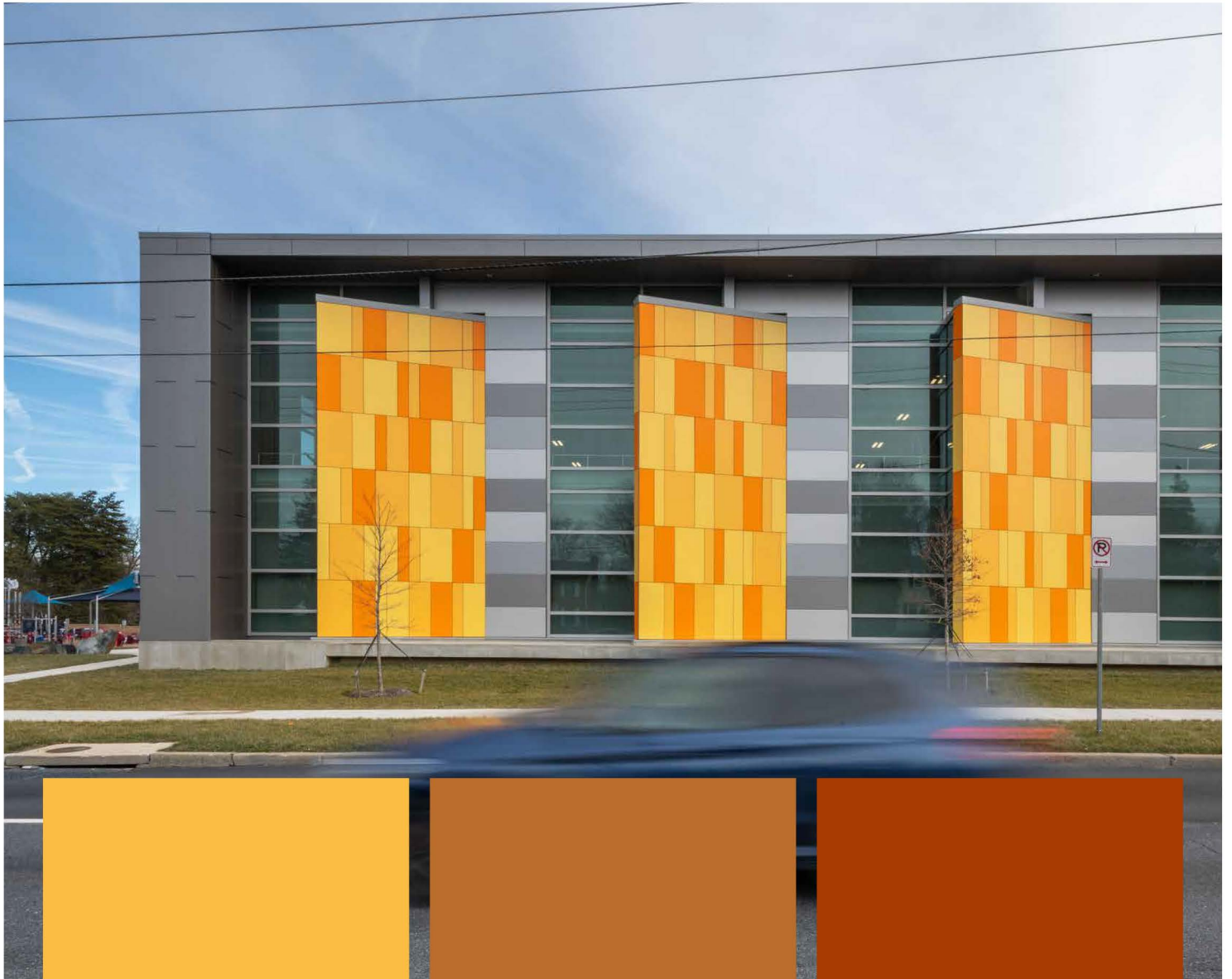


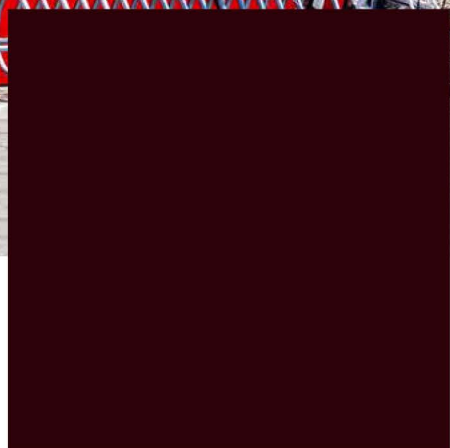
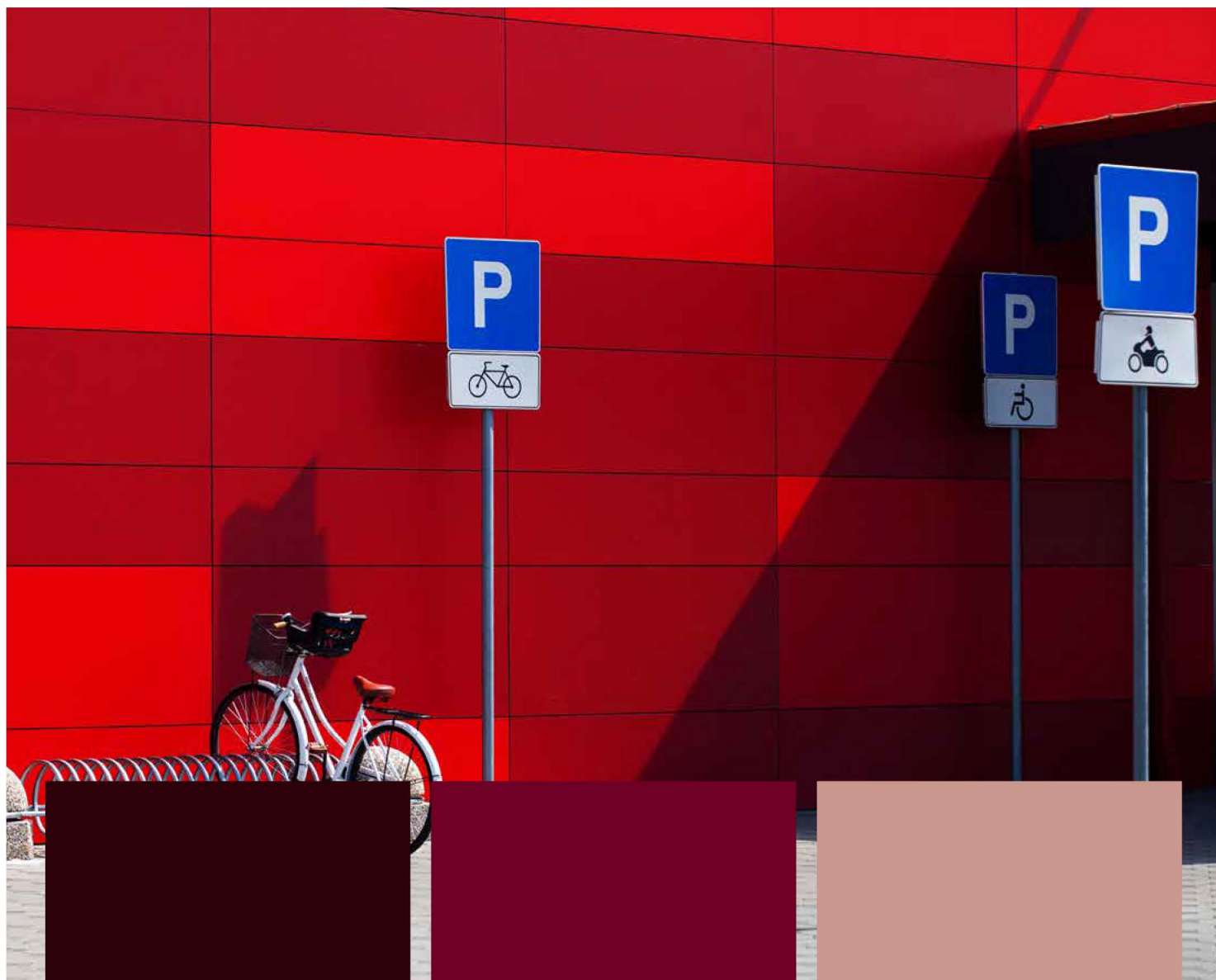
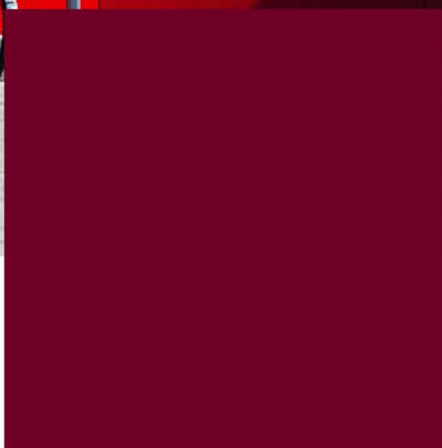
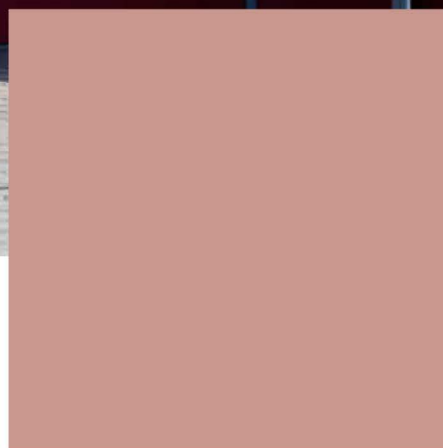
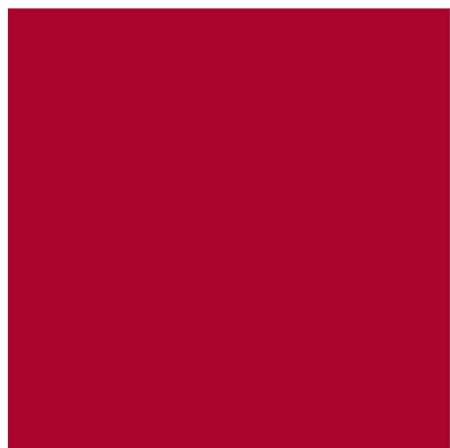
0851 Winter White

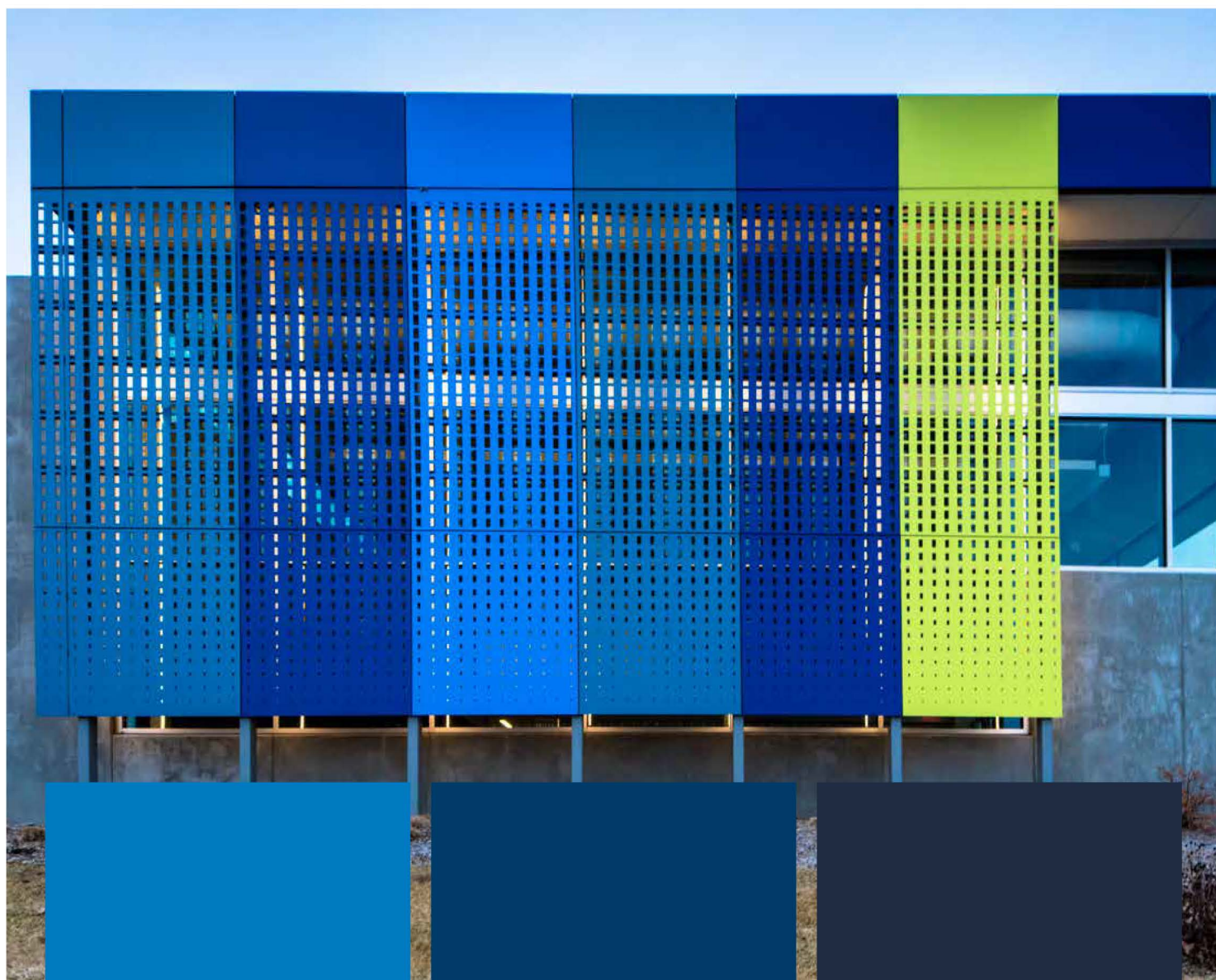


0066 Sand

**0864 Mustard****0654 Jasmin****0065 Ivory****0865 Lemon****0647 Golden Yellow****0687 Maize**

**0736** Saffron**5032** Cinnamon**0873** Red Pepper**0661** Terracotta**0691** Purple**0874** Maroon

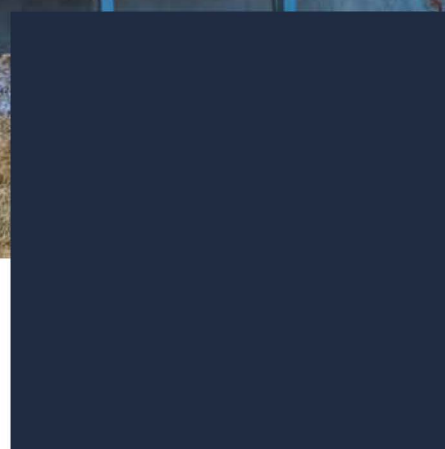
**3007** Black Red**0680** Wine Red**0020** Ballerina**3003** Rubinus Red**0689** Dark Red**0674** Mars Red



0717 Atlantic



0237 Gentian Blue



0702 Night Blue



0706 Glacier Blue



0703 Dove Blue



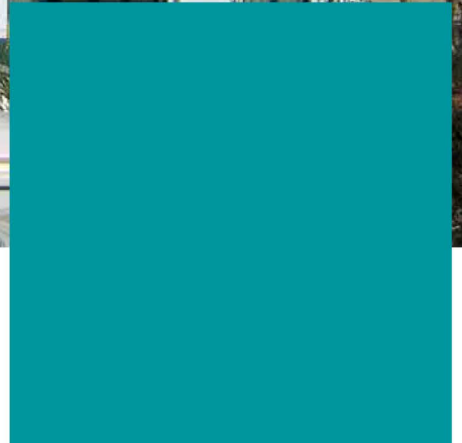
0712 Steel Blue



0631 Turquoise



0617 Petrol Green



0056 Atlantis



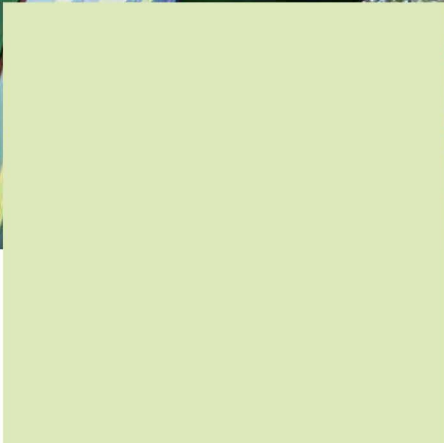
0059 Dark Green



0662 Jade Green



0663 Reseda Green

**0592** Kiwi Green**0849** Frosted Green**0623** Green**0725** Yellowish Green**0850** Green Valley**0591** Fir Green

Nature

Whatever people put together in terms of colour, shape, and texture, the world around us has already long since created it in one form or another. There is so much to discover, and most of it will be found in the smallest details.

In our Exterior 2.3 | Essential Nature range, you'll find both bold and subtle wood textures and shades for your project.

For you to create.



0907 Graphite Flagship Oak

0908 Grey Flagship Oak

0925 Butterfly Hickory




0801 Fir Platinum



0936 Thunder Maple

www.surfacesquared.com.au



5172 Marshland Oak



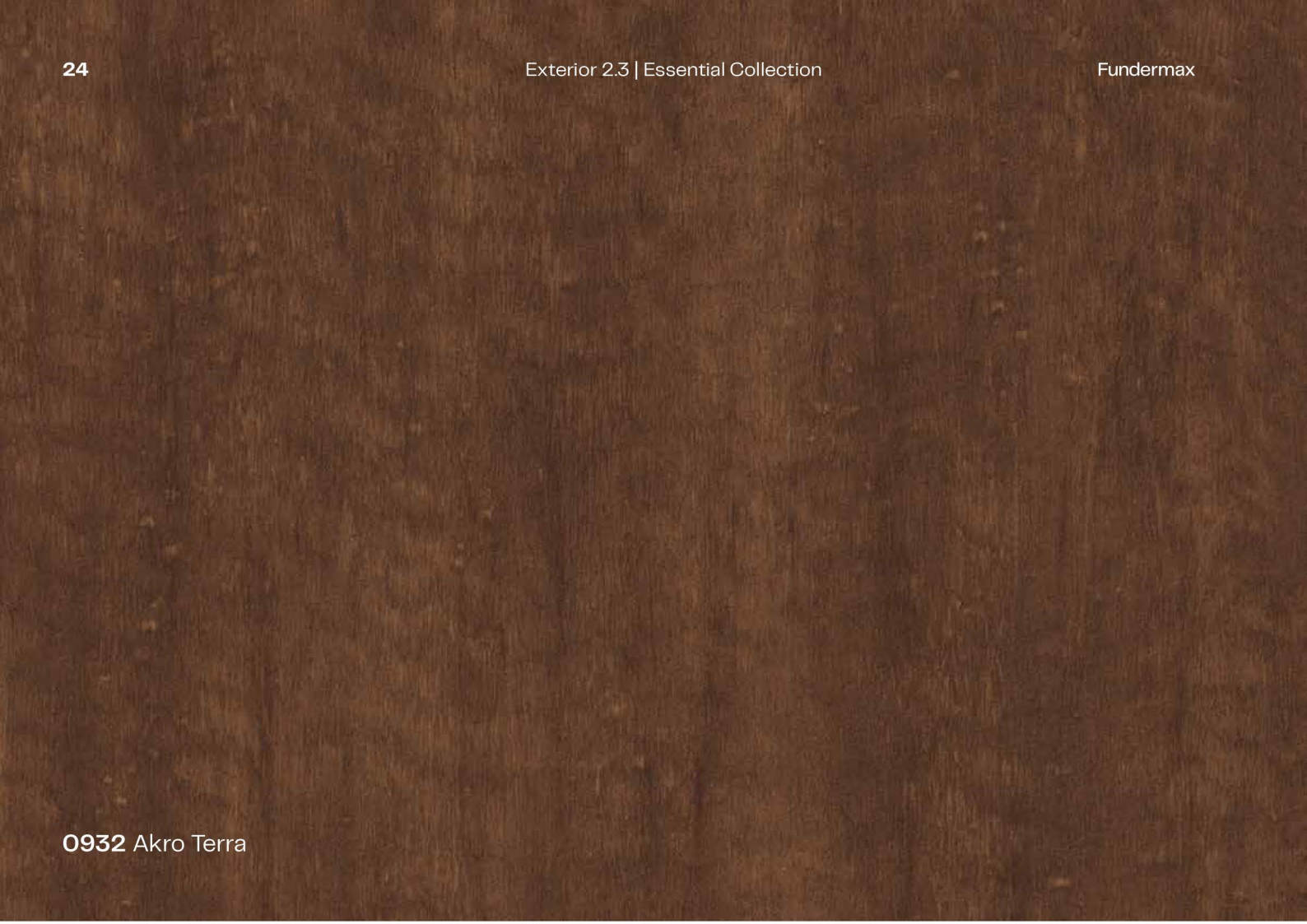
0869 Smoked Marvel Walnut

0847 Smoked Jazz Oak


0909 Brown Flagship Oak

www.surfacesquared.com.au






0932 Akro Terra



0824 Brown Bistro Oak

www.surfacesquared.com.au



0901 Dark Rainbow Rosewood



0870 Dark Honey Marvel Walnut

5173 Barrique Oak

0846 Caramel Jazz Oak

0820 Hazel Heritage Oak

0919 Ecuador

0935 Voyager Oak

The background of the entire page is a vertical wood grain texture, showing natural wood patterns and knots in a medium brown tone.

5171 Polar Oak

0868 Caramel Marvel Walnut
www.surfacesquared.com.au

0923 Enigma Oak



0125 Natural Oak

0931 Akro Almond

0927 Creek Larch

0924 Taurus Oak

0922 Amazon

0601 Sun Pear

0168 Akro Rust

www.surfacesquared.com.au

0169 Akro Ruby




0160 Dark Akro

0161 Light Akro


0162 Akro Sahara

www.surfacesquared.com.au




A close-up image of a textured surface with a mottled, earthy appearance. The colors range from light beige to dark brown, with visible vertical and diagonal streaks and patches, suggesting a weathered or aged material.

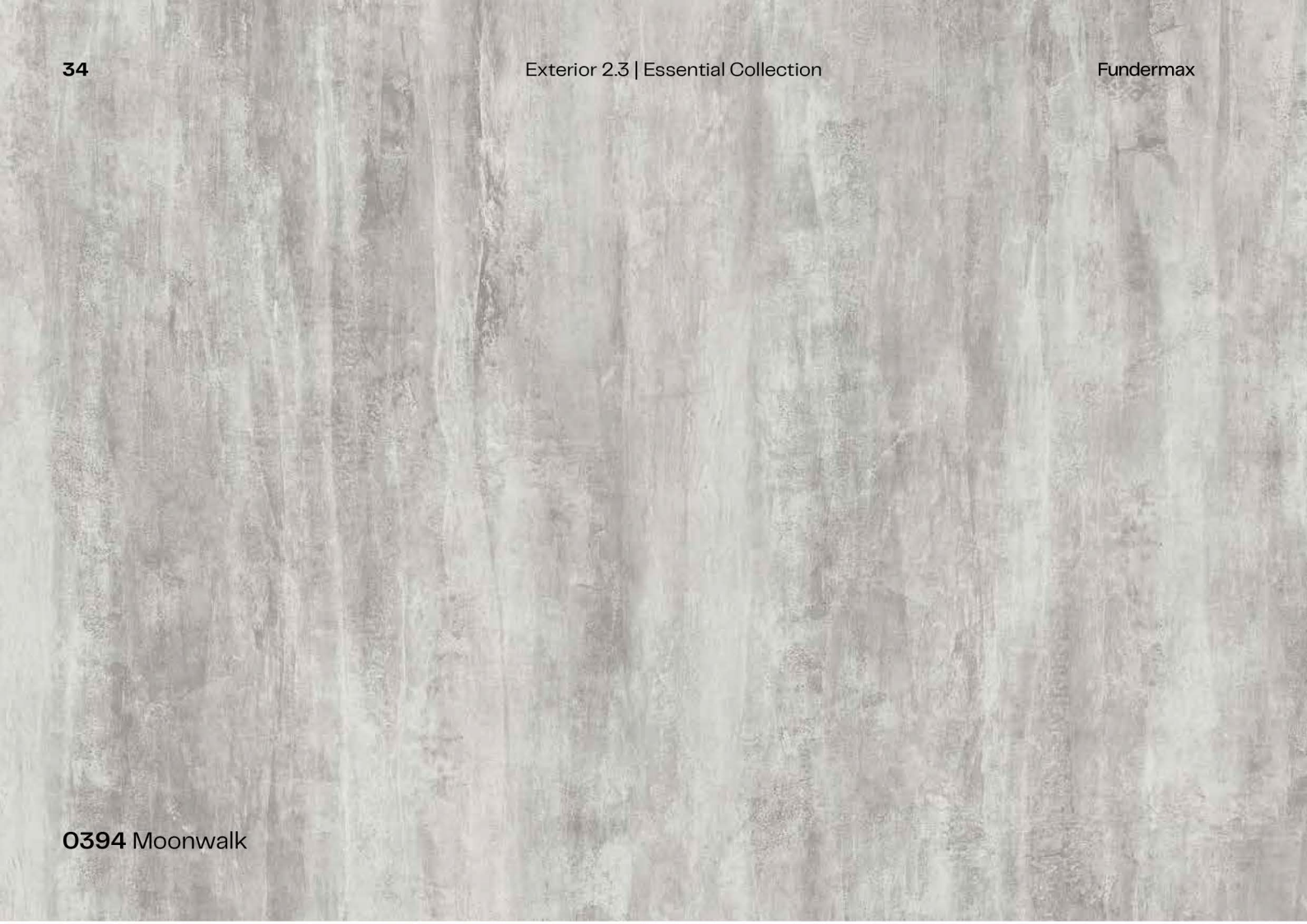
0496 Colosseum

A close-up image of a textured surface with a light, neutral tone. The texture is characterized by fine, vertical, slightly wavy lines that run across the entire surface, giving it a subtle, organic feel.


0421 Venus

A close-up image of a textured surface with a light, neutral tone. The texture is characterized by fine, vertical, slightly wavy lines that run across the entire surface, giving it a subtle, organic feel.


0426 Loft



0394 Moonwalk



0861 Grey Eclipse Quartzstone
www.surfacesquared.com.au




0497 Stonehenge

0793 Patina Tin

0027 Prado Agate Grey

0808 Desert Rose Sandstone

0406 Rockstar



0794 Patina Bronze



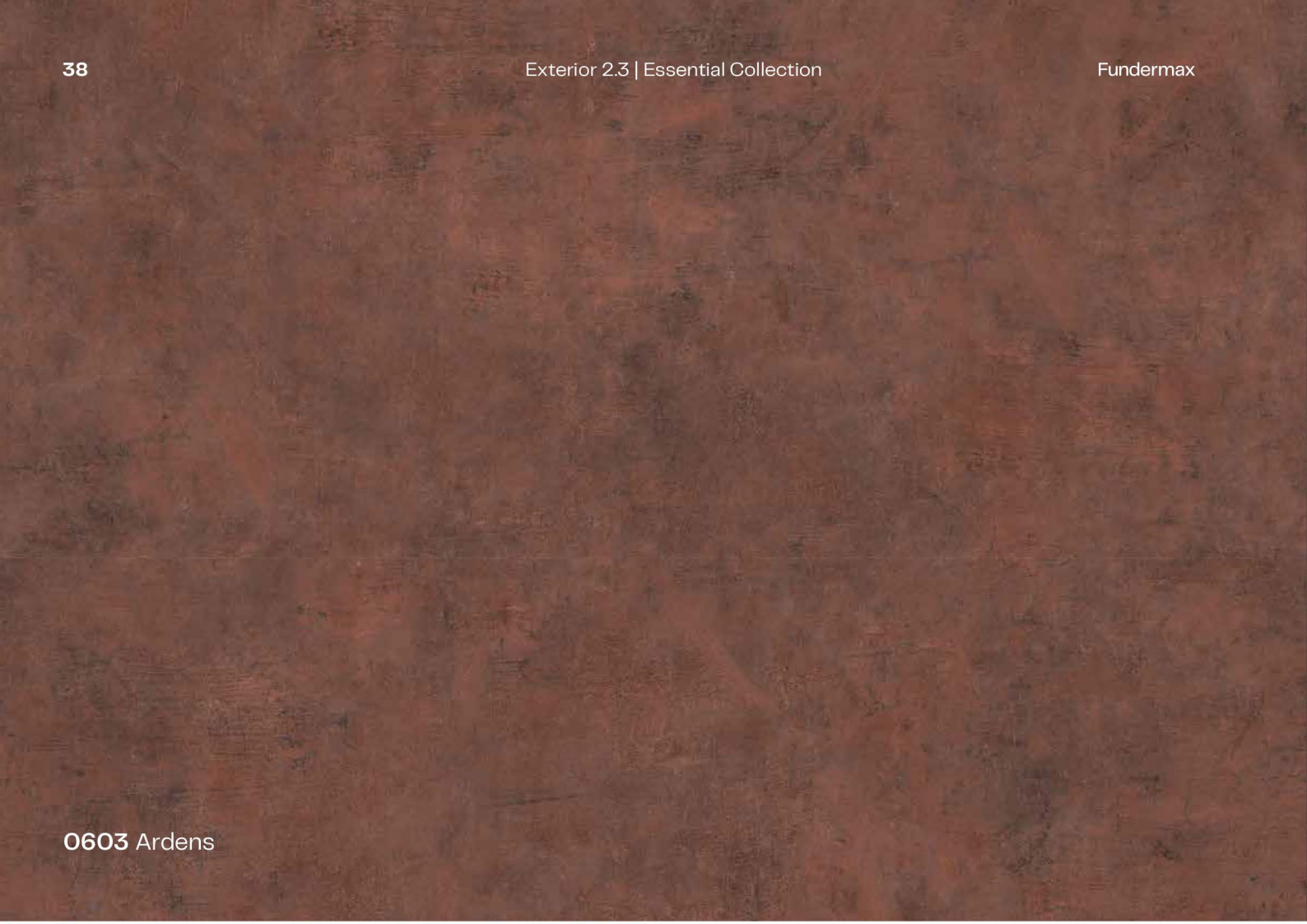
0429 Corro

www.surfacesquared.com.au



0028 Prado Brown





0603 Ardens



0798 Tambora

www.surfacesquared.com.au



0386 Blues



0159 Akro Black

0804 Metropolis

0799 Black Jack

www.surfacesquared.com.au




A large, dark, textured surface with a mottled, almost charcoal-like appearance, showing subtle variations in tone and texture.

0428 Cave

A light grey, textured surface with a fine, vertical grain pattern, resembling a high-quality wood or a fine-grained stone.

0158 Akro Grey

www.surfacesquared.com.au

A dark grey, textured surface with a mottled, almost charcoal-like appearance, showing subtle variations in tone and texture.


0894 Black Pearl Concrete

0903 Urban Galaxy Limestone

0902 Black Stingray Limestone



0427 Skyline



0860 White Blizzard Quartzstone
www.surfacesquared.com.au



0897 Grey Cliffhanger Slate





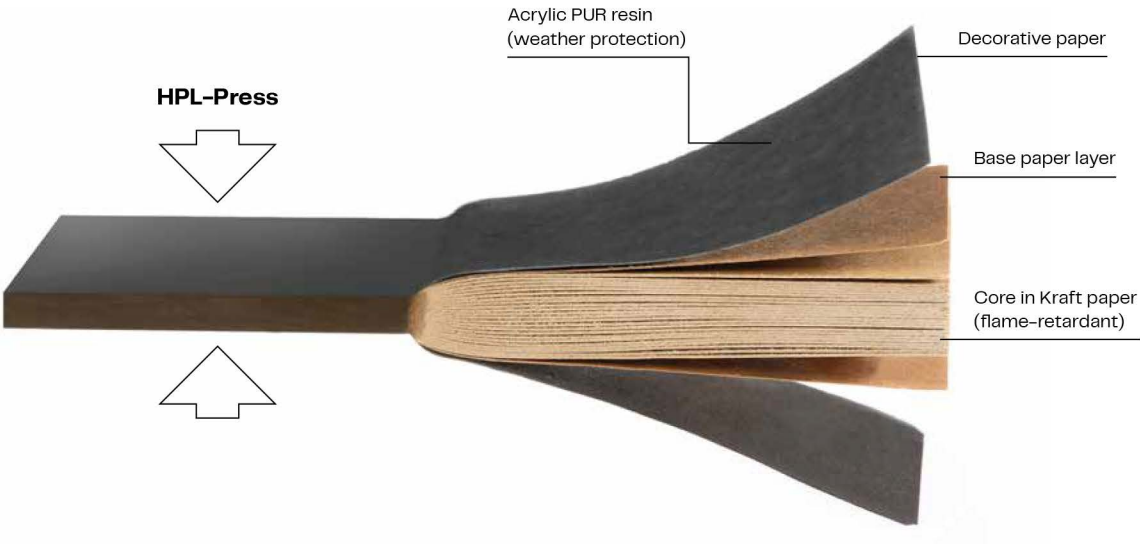
Decor overview

0080 Black	0091 Starlight	0085 White	0753 Cool Grey Medium	0776 Concrete Grey	0070 Carbon Grey
0900 Dark Cyber Grey	0762 Natural Grey Medium	1203 Grey	0074 Pastel Grey	0077 Charcoal	
	0144 Costa	0768 Sparrow	0875 Chocolate Brownie	0657 Sepia Brown	0153 Burano
0733 Hygienic White	0651 Cream	0627 Hygienic Beige	0645 Tobacco	0098 Mandola	0081 Alpaca
0687 Maize	0647 Golden Yellow	0665 Lemon	0736 Saffron	5032 Cinnamon	0873 Red Pepper
3007 Black Red	0680 Wine Red	0020 Ballerina	0661 Terracotta	0691 Purple	0874 Maroon
0706 Glacier Blue	0703 Dove Blue	0712 Steel Blue	0631 Turquoise	0617 Petrol Green	0056 Atlantis
0592 Kiwi Green	0849 Frosted Green	0623 Green	0059 Dark Green	0662 Jade Green	0663 Reseda Green
0725 Yellowish Green	0850 Green Valley				
0689 Dark Red	3003 Rubinius Red				
0674 Mars Red					
0702 Night Blue	0237 Gentian Blue				
0591 Fir Green					
0066 Sand	0851 Winter White	0073 Pale Ivory			
0654 Jasmin	0065 Ivory				
0887 Dark Offroad Graige	2206 Fango	0071 Fresco			
0742 Pebble Grey	0741 Birch Grey	0747 Medium Grey			

0909 Brown Flagship Oak	0932 Akro Terra	0803 Tyrol Pine	0601 Sun Pear	0805 Cosmopolis	0429 Corro	0897 Grey Cliffhanger Slate
0847 Smoked Jazz Oak	0824 Brown Bistro Oak	0922 Amazon	0169 Akro Rust	0406 Rockstar	0028 Prado Brown	0427 Skyline
0869 Smoked Marvel Walnut	0901 Dark Rainbow Rosewood	0924 Taurus Oak	0169 Akro Ruby	0808 Desert Rose Sandstone	0794 Patina Bronze	0860 White Blizzard Quartzstone
5172 Marshland Oak	0870 Dark Honey Marvel Walnut	0927 Creek Larch	0160 Dark Akro	0026 Prado Au Grey	0603 Ardens	0903 Urban Galaxy Limestone
0936 Thunder Maple	5173 Barrique Oak	0931 Akro Almond	0161 Light Akro	0793 Patina Tin	0798 Tambora	0802 Black Singray Limestone
0801 Fir Platinum	0846 Caramel Jazz Oak	0125 Natural Oak	0162 Akro Sahara	0027 Prado Agate Grey	0386 Blues	0898 Porto Nero Slate
0925 Butterfly Hickory	0935 Voyager Oak	0923 Enigma Oak	0496 Colosseum	0861 Grey Eclipse Quartzstone	0159 Akro Black	0428 Cave
0908 Grey Flagship Oak	0918 Ecuador	0868 Caramel Marvel Walnut	0421 Venus	0497 Stonehenge	0804 Metropolis	0894 Black Pearl Concrete
0807 Graphite Flagship Oak	0820 Hazel Heritage Oak	5171 Polar Oak	0426 Loft	0394 Moonwalk	0799 Black Jack	0158 Akro Grey

0909 Brown Flagship Oak	0932 Akro Terra	0803 Tyrol Pine	0601 Sun Pear	0805 Cosmopolis	0429 Corro	0897 Grey Cliffhanger Slate
0847 Smoked Jazz Oak	0824 Brown Bistro Oak	0922 Amazon	0169 Akro Rust	0406 Rockstar	0028 Prado Brown	0427 Skyline
0869 Smoked Marvel Walnut	0901 Dark Rainbow Rosewood	0924 Taurus Oak	0169 Akro Ruby	0808 Desert Rose Sandstone	0794 Patina Bronze	0860 White Blizzard Quartzstone
5172 Marshland Oak	0870 Dark Honey Marvel Walnut	0927 Creek Larch	0160 Dark Akro	0026 Prado Au Grey	0603 Ardens	0903 Urban Galaxy Limestone
0936 Thunder Maple	5173 Barrique Oak	0931 Akro Almond	0161 Light Akro	0793 Patina Tin	0798 Tambora	0802 Black Singray Limestone
0801 Fir Platinum	0846 Caramel Jazz Oak	0125 Natural Oak	0162 Akro Sahara	0027 Prado Agate Grey	0386 Blues	0898 Porto Nero Slate
0925 Butterfly Hickory	0935 Voyager Oak	0923 Enigma Oak	0496 Colosseum	0861 Grey Eclipse Quartzstone	0159 Akro Black	0428 Cave
0908 Grey Flagship Oak	0918 Ecuador	0868 Caramel Marvel Walnut	0421 Venus	0497 Stonehenge	0804 Metropolis	0894 Black Pearl Concrete
0807 Graphite Flagship Oak	0820 Hazel Heritage Oak	5171 Polar Oak	0426 Loft	0394 Moonwalk	0799 Black Jack	0158 Akro Grey

Composition of Max Compact Exterior Panels



The 'Biobased Product' label highlights biobased materials that contain a significant proportion of biomass by certifying their content of biobased materials.

A minimum proportion of biobased material is defined for each product family (60% for facade cladding).



FSC certification guarantees the origin and traceability of timber and paper products with a minimum amount of timber.

Certified products come from sustainable, socially responsible, and economically viable forestry management along the entire supply chain.



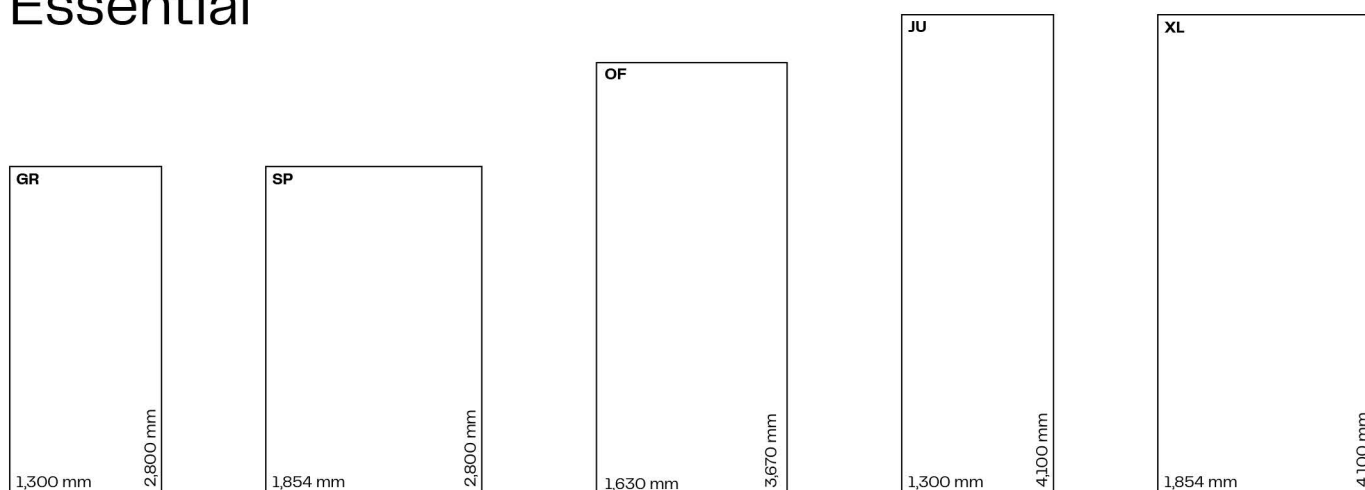
PEFC certification guarantees the origin and traceability of timber and paper products with an obligation for improvement.

Certified products come from sustainable forestry management that respects biodiversity and the vitality of ecosystems.

Max Compact Exterior F Quality

A high-quality construction product bearing the CE label for use as durable balcony and facade cladding. The panels are thermoset high-pressure laminates (HPL) that meet the requirements of EN 438-6, type EDF, with the most effective weather protection thanks to dual-cure acrylic polyurethane resin.

Exterior 2.3 Essential



Surfaces*

- NT

Sizes**

- 2,800 x 1,300 mm = 3.65 m²
- 4,100 x 1,300 mm = 5.33 m²
- 3,670 x 1,630 mm = 5.98 m²
- 2,800 x 1,854 mm = 5.19 m²
- 4,100 x 1,854 mm = 7.60 m²

Thicknesses

Thickness	Tolerance (EN 438-6, 5.3)
• 2.0 mm	± 0.2 mm
• 4.0 mm	± 0.3 mm
• 6.0 mm	± 0.4 mm
• 8.0, 10.0 mm	± 0.5 mm
• 12.0, 13.0 mm	± 0.6 mm

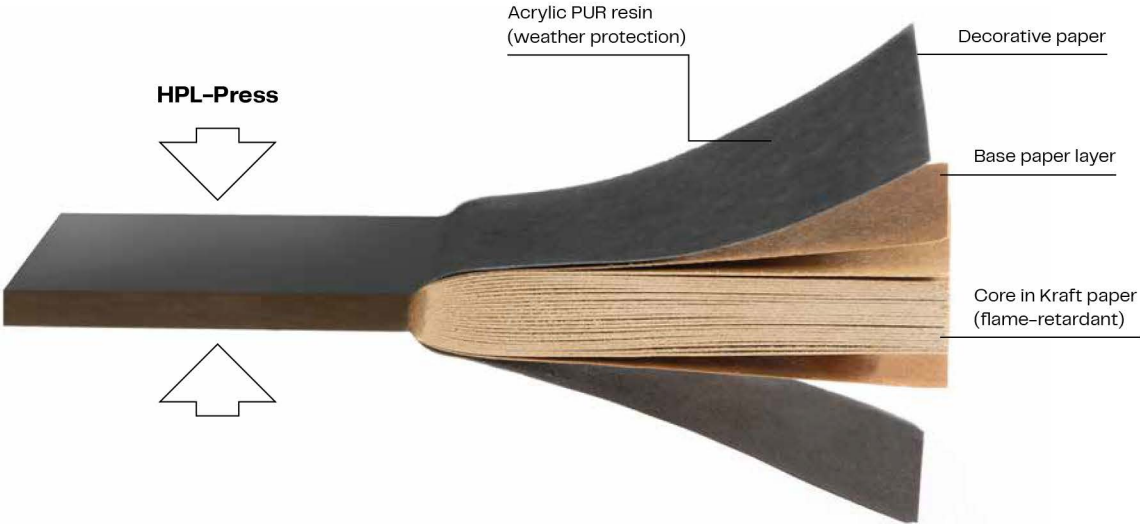
Core

- F Quality
- Flame-retardant
- Brown colour

* For the best possible appearance of the facade cladding, installation on an aluminum subframe is recommended. Timber is advised against, as an uneven surface can lead to a wavy appearance.

** Panel sizes with tolerances of +10–0 mm (EN 438-6, 5.3) are standard sizes—if absolute size and angle precision is required, cutting around all sides is recommended. Depending on the cut, the net measurement reduces by approx. 10 mm.

Composition of Max Compact Exterior Panels



The 'Biobased Product' label highlights biobased materials that contain a significant proportion of biomass by certifying their content of biobased materials.

A minimum proportion of biobased material is defined for each product family (60% for facade cladding).



FSC certification guarantees the origin and traceability of timber and paper products with a minimum amount of timber.

Certified products come from sustainable, socially responsible, and economically viable forestry management along the entire supply chain.



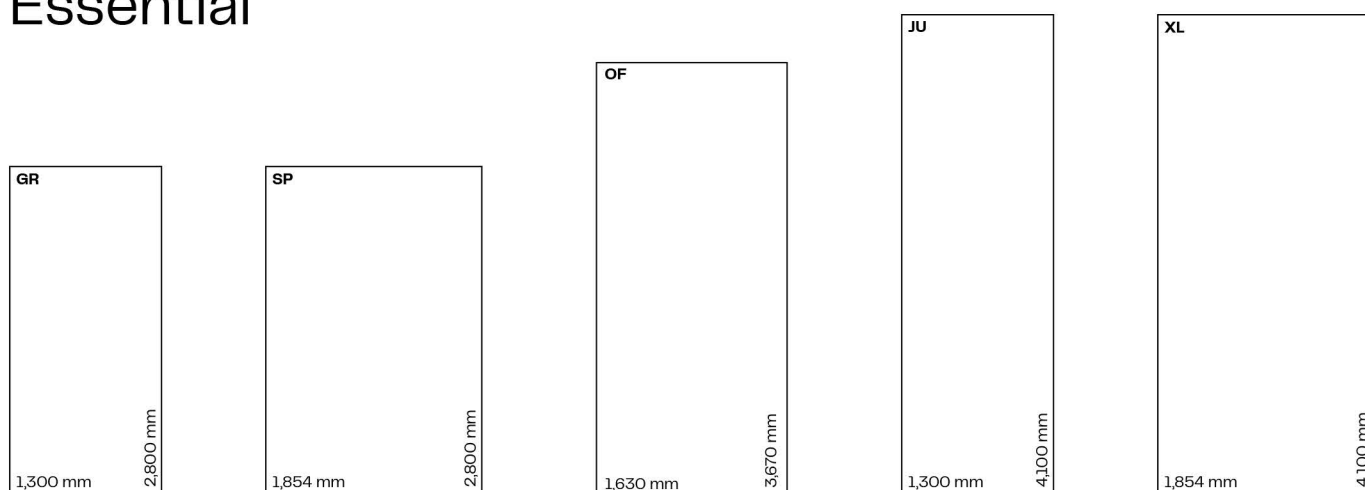
PEFC certification guarantees the origin and traceability of timber and paper products with an obligation for improvement.

Certified products come from sustainable forestry management that respects biodiversity and the vitality of ecosystems.

Max Compact Exterior F Quality

A high-quality construction product bearing the CE label for use as durable balcony and facade cladding. The panels are thermoset high-pressure laminates (HPL) that meet the requirements of EN 438-6, type EDF, with the most effective weather protection thanks to dual-cure acrylic polyurethane resin.

Exterior 2.3 Essential



Surfaces*

- NT

Sizes**

- 2,800 x 1,300 mm = 3.65 m²
- 4,100 x 1,300 mm = 5.33 m²
- 3,670 x 1,630 mm = 5.98 m²
- 2,800 x 1,854 mm = 5.19 m²
- 4,100 x 1,854 mm = 7.60 m²

Thicknesses

Thickness	Tolerance (EN 438-6, 5.3)
• 2.0 mm	± 0.2 mm
• 4.0 mm	± 0.3 mm
• 6.0 mm	± 0.4 mm
• 8.0, 10.0 mm	± 0.5 mm
• 12.0, 13.0 mm	± 0.6 mm

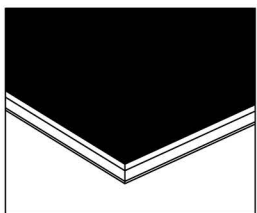
Core

- F Quality
- Flame-retardant
- Brown colour

* For the best possible appearance of the facade cladding, installation on an aluminum subframe is recommended. Timber is advised against, as an uneven surface can lead to a wavy appearance.

** Panel sizes with tolerances of +10–0 mm (EN 438-6, 5.3) are standard sizes—if absolute size and angle precision is required, cutting around all sides is recommended. Depending on the cut, the net measurement reduces by approx. 10 mm.

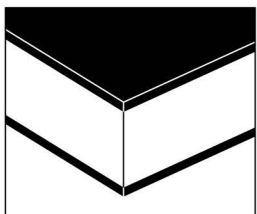
Options



Max Compact Exterior F Quality

Max Compact Exterior panels are supplied with decors on both sides as standard. The core is made to be flame-retardant, the surface is lightfast, and the dual-cure resin is extremely weather-resistant.

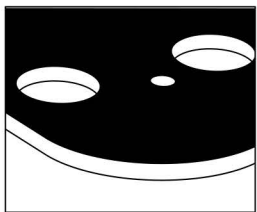
(Fire Test EN 13501-1, B-s2, d0)



Composite elements

To fabricate composite elements, the Max Compact Exterior F-Quality panels can also be supplied with reverse side sanded.

Max Compact Elements



Machining Service

Fundermax offers the option of cutting the panels and CNC machining. Using state-of-the-art systems, virtually all requirements can be fulfilled, from simple hole drilling for mounting facade panels to intricate machining for balcony components.

Consultation

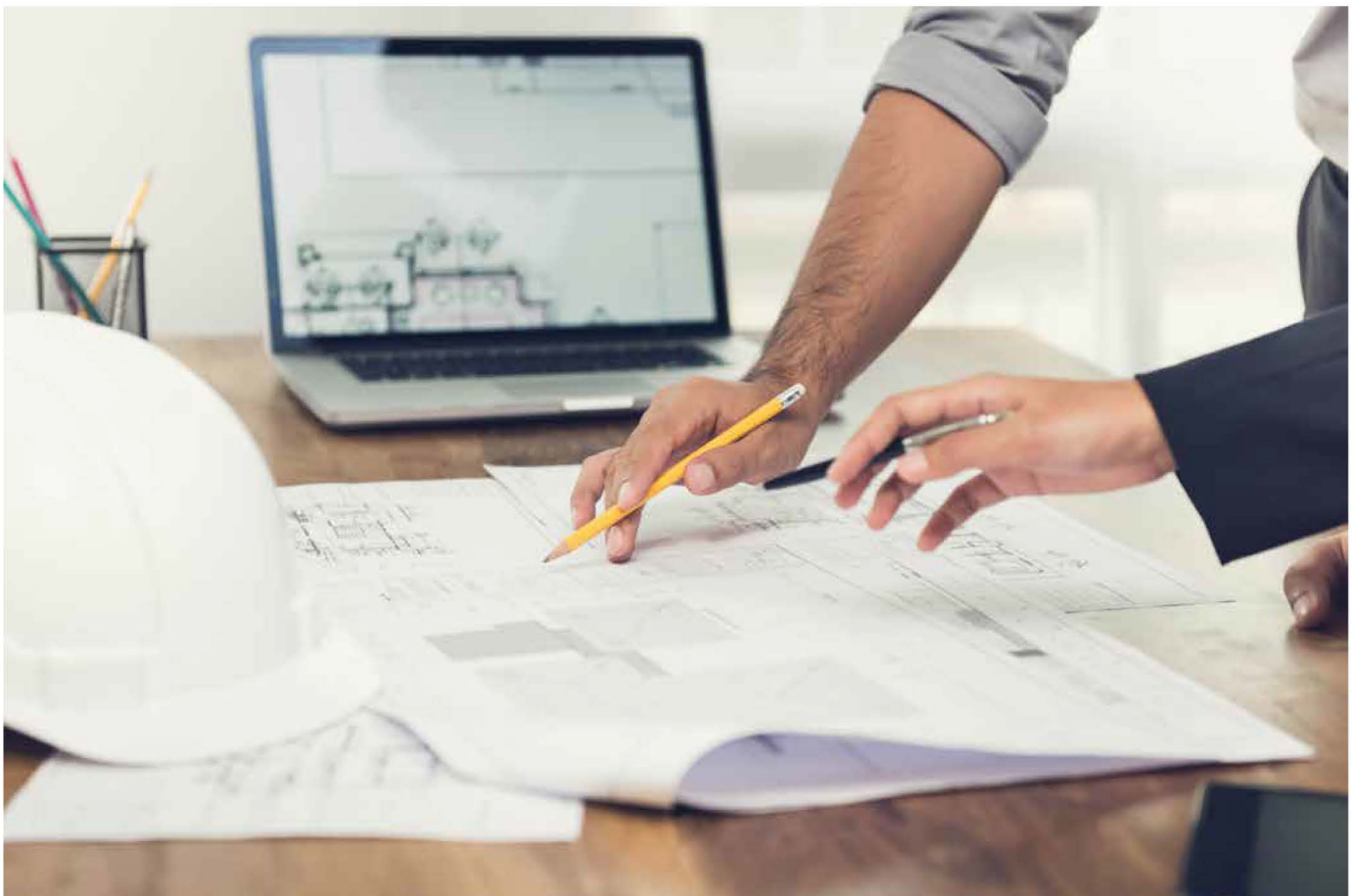
Make the most of our architect consultation service and the extensive track record of our application technology. Certifications, approvals, BIM objects, and technical information can be found in the Downloads section on our website or via the QR code. Materials and decorative samples can be ordered from our website around the clock.



You can go directly to the technical information for Exterior via this QR code

Tip

For a consistently light design for the interior of balconies, Max Compact Exterior panels can also be made with a white (reverse) side (O890 NT – Balkonweiss). The combination of different decors means the stated fixing distances should be reduced by at least 15%.



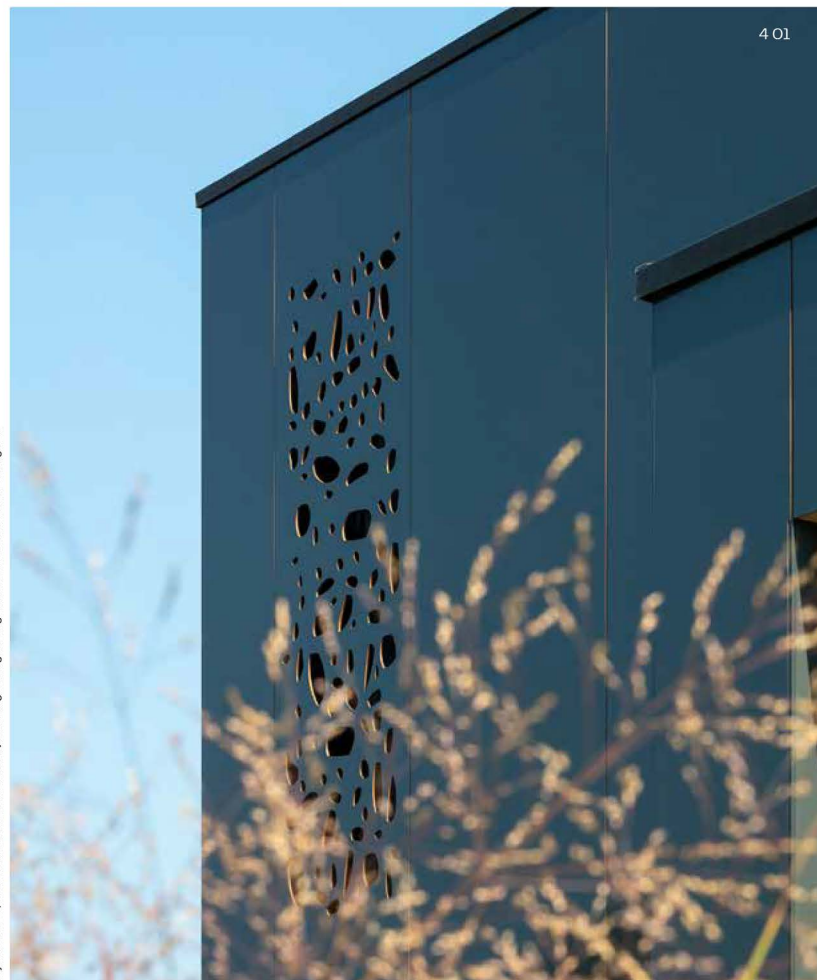
For you to create—Maximum design possibilities with Fundermax Exterior

Facades are a critical architectural element, giving a building its symbolic expression and conveying the intention of the architect. At the same time, they serve as a backdrop for the public space and urban life.

With its huge range of highly weather-resistant and optimally lightfast colours, decors, and surfaces, the Fundermax Exterior collection allows for an extremely broad spectrum of design possibilities. Fundermax custom printing offers maximum design freedom, as well as the option of choosing any shape and machined engraving, which can be designed using modern CNC systems.

4 01

Alejandro Prieto, Mini Oldenhave in Journal of Facade Design & Engineering Volume 9 / Number 2 / 2021 / Page 22



4 01 Project: Detached house for Sarka Kata
Client: Sarka Kata
Design: Toth Project
Designer: László Tóth

Custom printing

With Fundermax custom printing, everyone has the freedom to design facades, balconies, and other external features that are creative and unique. Your design can either be applied to individual panels, or—as in the example shown—across several panels. This is the ideal option for large-scale images and visual impact.

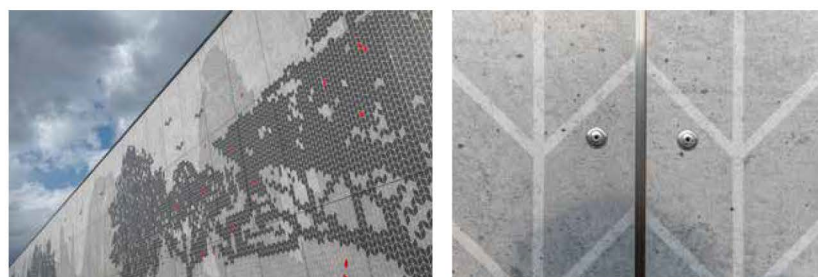


Fa. Hauk factory

The new factory is a contrast to the original neo-classical facade of the Vilém Pelly spinning building, which had to be torn down after a major fire in 2020. The historic spinning building was a landmark in the town for more than a century.

The task of Graphite Studio was to give the large new, functional facade of the factory a human scale.

The unique and personalized design suits the surroundings of the site and includes diamond shapes in reference to the company logo. A total of 538 digitally printed Fundermax panels were used to create the whole external facade.



4 02 Project: Fa. Hauk factory, Czech Republic
Client: Hauk s.r.o
Design: graphite studio s.r.o
Designers: Klára Maršíčková, Tomáš Buble

Contact and support
Individual.Druck@fundermax.biz



Scan here to view the
custom decor data sheet

Design freedom for facade layout and surface design

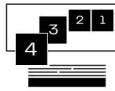
Thanks to modern CNC systems, it is possible to design creative facade layouts and add accents using machined engraving. Fundermax Exterior panels are uniform in their composition, so sealing the edges isn't required.

Make use of our decades of experience in the machining of compact panels and order your project so that it's pre-sorted and ready for installation.

Compact Elements by Fundermax services



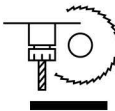
Pre-sorted and labeled
according to construction
phase



Pre-sorted, labeled,
and palletized ready for
installation



CNC
surface design



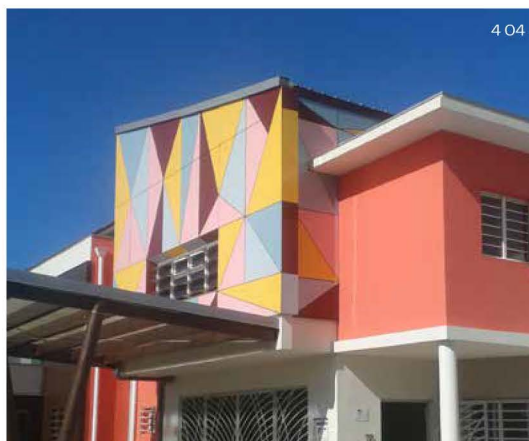
Machining compact
panels

Advantages

- No personal risk when cutting
- Precision machining results
- Can be delivered without offcuts on request, reducing workload when closing down the construction site
- Numbering, palletizing, and sorting in preparation for installation makes construction site logistics easier and saves space



4 03



4 04



4 05

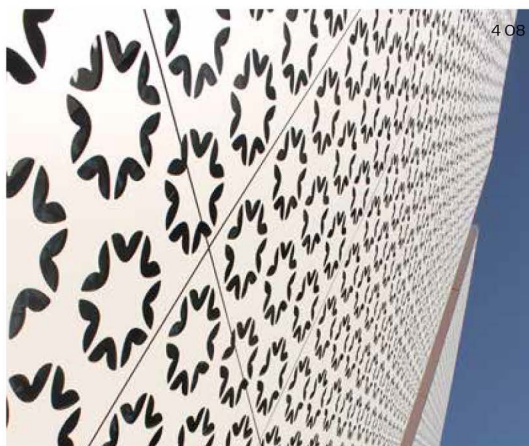


4 06

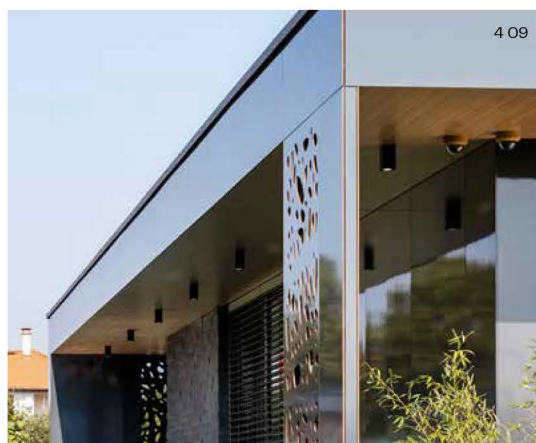
- 4 03** Facade layout
Project: Aquapark
- 4 04** Facade layout
Project: Construction of School
- 4 05** Facade layout
Project: Eurospar St. Valentin
- 4 06** Facade layout
Project: Veganista



4 07



4 08



4 09



4 10

- 4 07** Openings and engraving
Project: Cinema
- 4 08** Openings and engraving
Project: McDonald's Batumi
- 4 09** Openings and engraving
Project: Detached house
- 4 10** Openings and engraving
Project: Music school

5 Exterior Pro Collections

Exterior Pro 2.3 Surface

Exterior 2.3 | Essential offers maximum choice of decors and maximum efficiency with the NT surface.

For designs with surface textures and visual effects, you'll find a selection of Exterior 2.3 | Essential decors with the Gloss, Sky, and Paragon surfaces in the **Exterior Pro 2.3 | Surface** collection.



Exterior Pro 2.3 | Surface

NG Gloss

NP Paragon

NY Sky

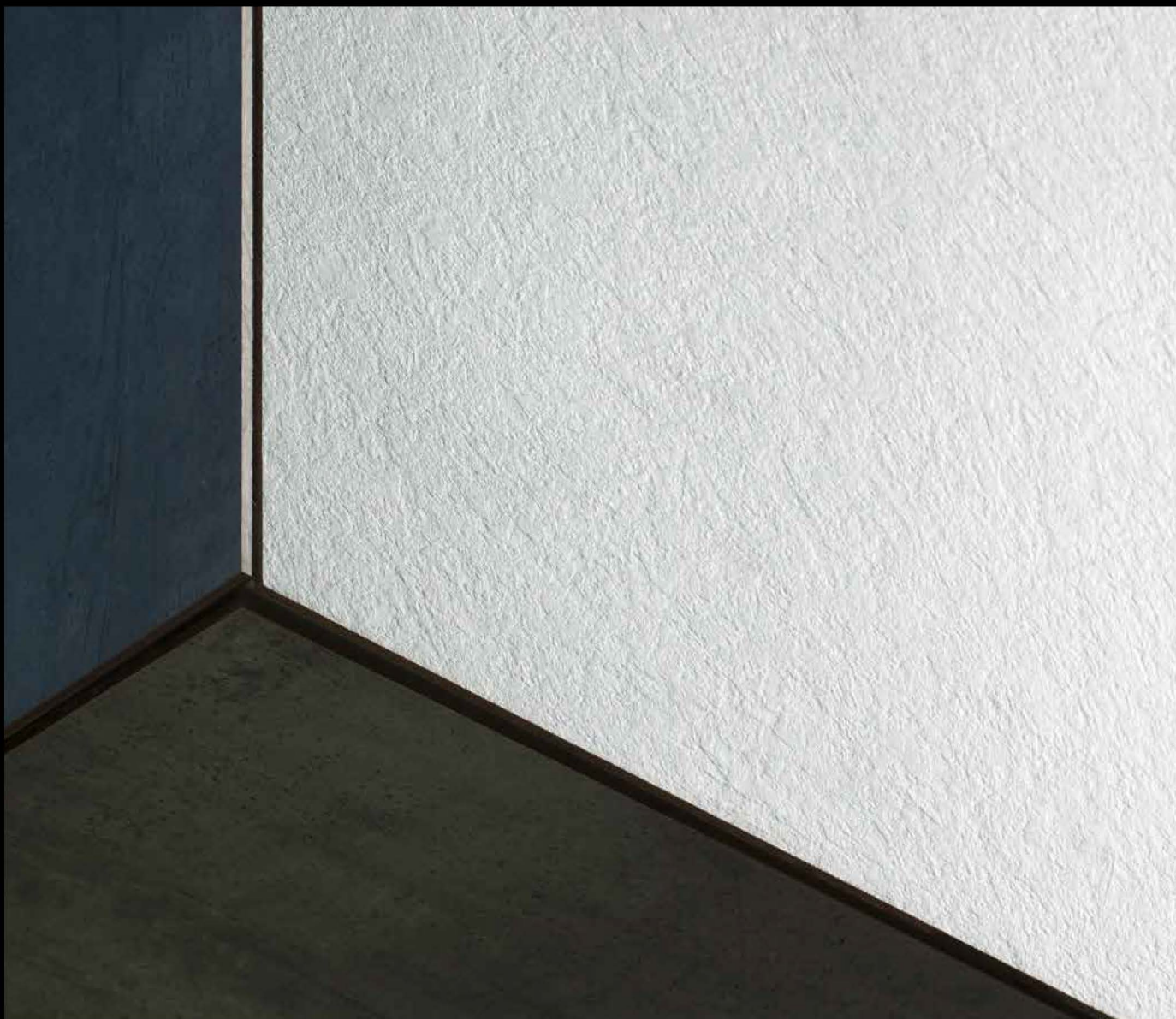
NG Gloss

Combined with solid colours, the impact of NG Gloss is bold and expressive, while with wood and other material effects, it is exclusive and elegant. The surroundings are incorporated into the design through the high reflectivity of the surface, adding to its appeal.



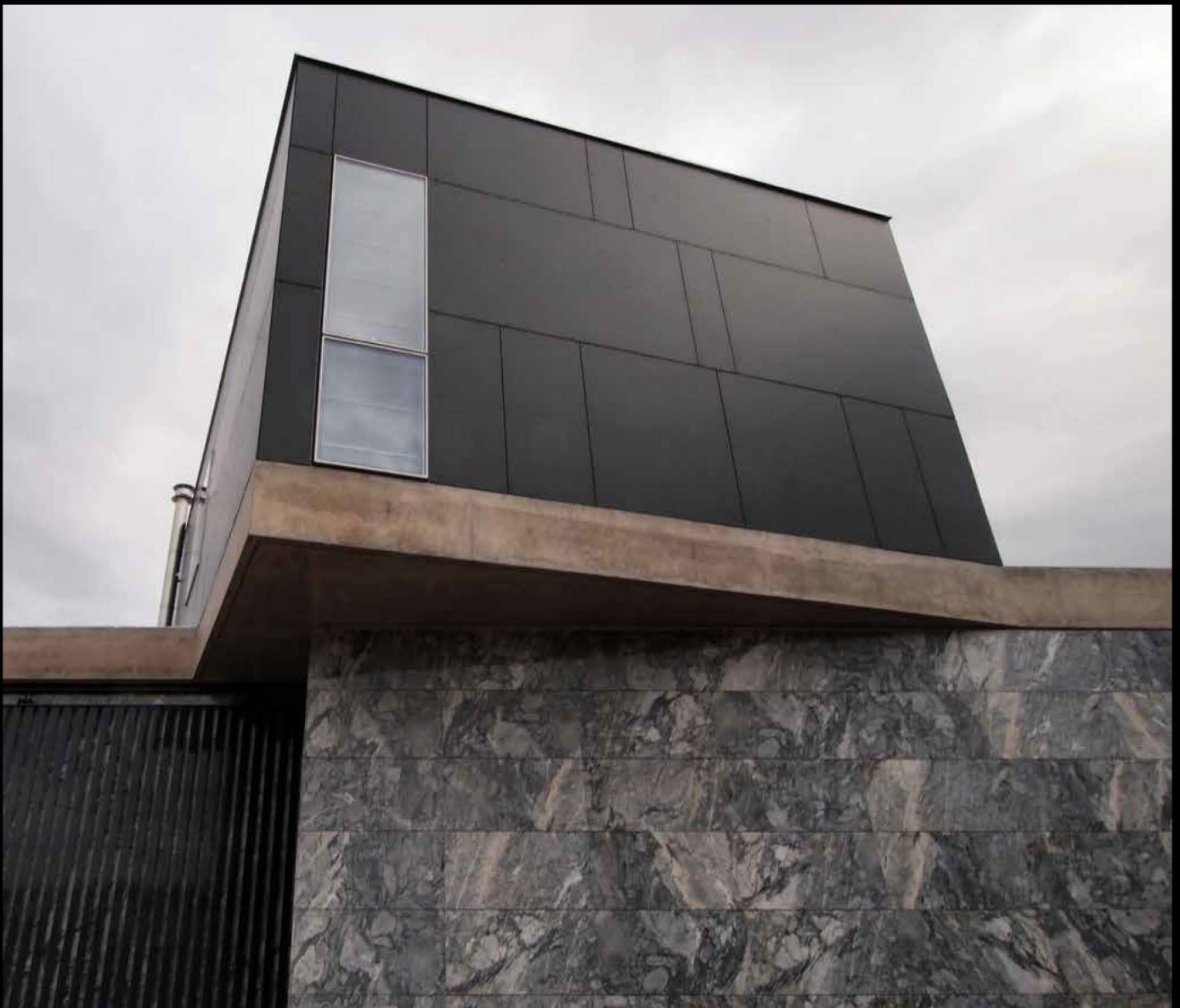
NY Sky

Convincing depth effect and pleasant feel—this texture is spirited, raw, and natural, and complements the range of surfaces perfectly.



NP Paragon

This matte surface with anti-finger print technology is calming and self-assured. This is highlighted by the pleasant and high-value feel of NP Paragon.



Exterior Pro 2.2 Podio

Weatherproof, slip-resistant and scratch-resistant, these are just a few criteria that our specially developed balcony panel Max Compact Exterior Podio with Hexa surface meets. Due to the easy installation by screwing or gluing as well as the slip resistance according to R10 DIN 51130 and DIN 51097 it is perfectly suitable for balconies, stairs and landings. Because of the selection of different decors, the plate leaves nothing to be desired.



Exterior Pro 2.2 | Podio



Exterior Pro 2.2 Authentic

Each decor of the Authentic Collection is available in three surface finishes:

- NT
- NY
- NH

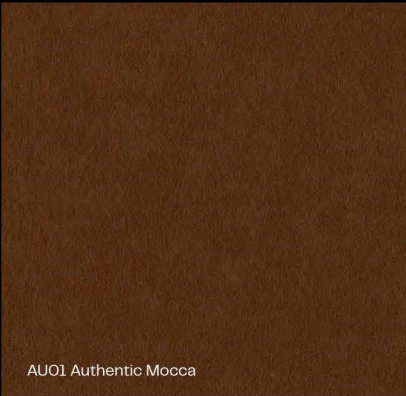


Exterior Pro 2.2 | Authentic

Lovers of brown and natural tones can now enjoy three completely new decors, all part of the Authentic Natura (AUTN) family.

Authentic Mocca

Sometimes stronger, milder, darker, lighter—all in all, Authentic Mocca is a more than tasteful composition.



AU01 Authentic Mocca



Authentic Pecan

With pecans, the treasured content is protected by a resistant shell. The same is true of a building's interior and facade. By using "Authentic Pecan" an aesthetically pleasing look can be achieved.

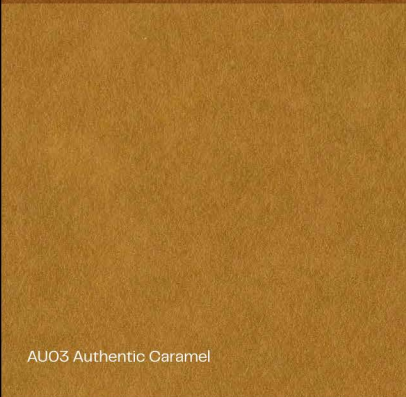


AU02 Authentic Pecan



Authentic Caramel

Facades in a "salted caramel look" range from golden yellow to honey brown. This decor was inspired by the widely loved caramel candy with its different shades of colour.



AU03 Authentic Caramel



Exterior 2.3 Essential

Delivery programme / valid from April 2023

surface 
squared



For you to create



Fundermax

Exterior 2.3 Essential

(from April 2023)

Exterior 2.3 Essential (from April 2023)			Collection	Exterior 2.3 Essential						Pro 2.3 Surface	Podio, Hexa	m.look ¹⁹		Decor on rear side ¹⁹	Decor direction	New for 2023	Compact Interior
			Quality	F						F	F	A2					
			Format (mm)	2800x1300mm	4100x1300mm	2800x1854mm	4100x1854mm	3670x1630mm	4100x1300mm	4100x1854mm	3580x1580mm						
			Thickness (mm)	2.0 4.0 6.0 8.0 10.0 12.0 13.0	2.0 4.0 6.0 8.0 10.0 12.0 13.0	2.0 4.0 6.0 8.0 10.0 12.0 13.0	2.0 4.0 6.0 8.0 10.0 12.0 13.0	2.0 4.0 6.0 8.0 10.0 12.0 13.0	6.0 8.0 10.0 12.0 13.0	6.0 8.0 10.0 12.0 13.0 16.0 18.0 20.0	7.0 9.0 12.0						
Core			brown	brown	brown	brown	brown	brown	brown	brown	grey						
Decor type	Decor no.	Decor name	Nearest NCS Code ¹⁾ / Type of wood	NT ⁶⁾	NT ⁶⁾	NT	NT	NT	NT	NG, NP, NY ^{12,34,5}	NH / NT	NT					
U	0020	Ballerina	S 3020-Y90R	o	o	o	o	o					X	N			
M	0026	Prado Alu Grey		o	o	o	o	o				o	X	L			
M	0027	Prado Agate Grey		o	o	o	o	o			o		X	L			
M	0028	Prado Brown		o	o	o	o	o			o		X	L			
U	0056	Atlantis	S 3040-B40G	o	o	o	o	o			o		X	N			
U	0059	Dark Green	S 5020-G	o	o	o	o	o			o		X	N			
U	0065	Ivory	S 0510-Y20R	o	o	o	o	o					X	N			
U	0066	Sand	S 1505-Y20R	o	o	o	o	o			o ⁸⁾		X	N			
U	0070	Carbon Grey	S 7502-B	o	o	o	o	o		NG, NP	o		X	N			
S	0070 + G	Carbon Grey + Glitter		o	o					NG, NP, NY			X	R			
U	0071	Fresco	S 2005-Y50R	o	o	o	o	o					X	N			
U	0073	Pale Ivory	S 0505-G90Y	o	o	o	o	o			o		X	N			
U	0074	Pastel Grey	S 2500-N	o	o	o	o	o		NG, NP	o ⁸⁾		X	N			
S	0074 + G	Pastel Grey + Glitter		o	o					NG, NP, NY			X	R			
U	0075	Dark Grey	S 5000-N	o	o	o	o	o		NG, NP	o ⁸⁾		X	N			
U	0077	Charcoal	S 7502-R	o	o	o	o	o		NG, NP	o		X	N			
U	0080	Black	S 9000-N	o	o	o	o	o		NG, NP	o		X	N			
S	0080 + G	Black + Glitter		o	o					NG, NP, NY			X	R			
U	0081	Alpaca	S 2010-Y20R	o	o	o	o	o					X	N			
U	0085	White	S 0502-G50Y	o	o	o	o	o		NG, NP, NY	o		X	N			
U	0091	Starlight	S 0502-R50B	o	o	o	o	o		NG, NP, NY	o		X	N			
U	0098	Mandola	S 3010-Y20R	o	o	o	o	o				o	X	N			
H	0125	Natural Oak		o	o	o	o	o				o	X	L			
U	0144	Costa	S 3005-Y20R	o	o	o	o	o			o ⁸⁾		X	N			
U	0153	Burano	S 6010-Y30R	o	o	o	o	o					X	N			
M	0158	Akro Grey		o	o	o	o	o			o	o	X	L			
M	0159	Akro Black		o	o	o	o	o			o	o	X	L			
H	0160	Dark Akro		o	o	o	o	o			o		X	L			
H	0161	Light Akro		o	o	o	o	o			o	o	X	L			
H	0162	Akro Sahara		o	o	o	o	o			o		X	L			
H	0168	Akro Rust		o	o	o	o	o			o		X	L			
H	0169	Akro Ruby		o	o	o	o	o			o		X	L			
U	0237	Gentian Blue	S 5040-R80B	o	o	o	o	o		NG	o		X	N			
M	0386	Blues		o	o	o	o	o			o	o	X	L			
M	0394	Moonwalk		o	o	o	o	o		NY	o		X	L			
M	0406	Rockstar		o	o	o	o	o		NY	o		X	L			
M	0421	Venus		o	o	o	o	o		NY			X	L			
M	0426	Loft		o	o	o	o	o		NY	o	o	X	L			
M	0427	Skyline		o	o	o	o	o		NY	o ⁸⁾	o	X	L			
M	0428	Cave		o	o	o	o	o					X	L			
M	0429	Corro		o	o	o	o	o			o	o	X	L			
M	0496	Colosseum		o	o	o	o	o		NY			X	L			
M	0497	Stonehenge		o	o	o	o	o		NY	o	o	X	L			
U	0591	Fir Green	S 7020-B90G	o	o	o	o	o			o		X	N			
U	0592	Kiwi Green	S 1015-G40Y	o	o	o	o	o			o		X	N			
H	0601	Sun Pear		o	o	o	o	o			o		X	L			
M	0603	Ardens		o	o	o	o	o			o		X	R			
U	0617	Petrol Green	S 6020-B30G	o	o	o	o	o			o		X	N			
U	0623	Green	S 4040-G10Y	o	o	o	o	o			o		X	N			
U	0627	Hygienic Beige	S 2010-Y40R	o	o	o	o	o			o		X	N			
U	0631	Turquoise	S 6020-B10G	o	o	o	o	o			o		X	N			
U	0645	Tobacco	S 4020-Y30R	o	o	o	o	o			o		X	N			
U	0647	Golden Yellow	S 1050-Y10R	o	o	o	o	o			o		X	N			
U	0651	Cream	S 0907-Y50R	o	o	o	o	o			o		X	N			
U	0654	Jasmin	S 1515-Y20R	o	o	o	o	o			o		X	N			
U	0657	Sepia Brown	S 8010-Y50R	o	o	o	o	o			o		X	N			
U	0661	Terracotta	S 4040-Y80R	o	o	o	o	o									

Fundermax Deutschland GmbH

Mundenheimer Weg 2
67117 Limburgerhof, Germany
info@fundermax.biz
www.fundermax.com

Fundermax France S.a.r.l.

3 Cours Albert Thomas
69003 Lyon, France
T +33 (0)4 78 68 28 31
infofrance@fundermax.biz
www.fundermax.com

Fundermax India Pvt. Ltd.

Sy. No. 7, Honnenahalli, Doddballapur Road,
Yelahanka Hobli, Bangalore – 560064, India
T +96113 99211
officeindia@fundermax.biz
www.fundermax.in

Fundermax Italia s.r.l.

Viale Venezia 22
33052 Cervignano del Friuli, Italy
infoitaly@fundermax.biz
www.fundermax.com

Fundermax North America, Inc.

9401-P Southern Pine Blvd.
Charlotte, NC 28273, U.S.
T +1 980 299 0035
office.america@fundermax.biz
www.fundermax.us

Fundermax Polska Sp. z o.o.

ul. Rybitwy 12
30-722 Kraków, Poland
T +48 (0)12 65 34 528
infopoland@fundermax.biz

Fundermax Swiss AG

Industriestrasse 38
5314 Kleindöttingen, Switzerland
T +41 (0)56 268 83 11
infoswiss@fundermax.biz
www.fundermax.com

surface 
squared

Contact us

74 Highbury Rd, Burwood VIC 3125
Phone: 1300 722 113
Fax: 03 9888 7455
Email: info@surfacesquared.com.au
Web: <https://www.surfacesquared.com.au>

Fundermax GmbH

Klagenfurter Straße 87–89, 9300 St. Veit/Glan, Austria
T: +43 (0)5 9494–0, F: +43 (0)5 9494–4200
office@fundermax.at
www.fundermax.com

MEMBER OF *Constantia* INDUSTRIES

